



CONSOLIDATED COMMISSION ON UTILITIES

Guam Power Authority | Guam Waterworks Authority

P.O. Box 2977 Hagatna, Guam 96932 | (671) 648-3002 | guamccu.org

GUAM POWER AUTHORITY WORK SESSION

CCU Conference Room

4:30 p.m., Thursday, October 15, 2020

AGENDA

1. CALL TO ORDER

2. ISSUES FOR DECISION

- 2.1 [Stanley Consultant EPCM Contract Budget Amendment / Resolution 2020-20](#)
- 2.2 [Extension of Current Contract with Aggreko / Resolution 2020-21](#)
- 2.3 [Exercising Option to Renew Provision for Unarmed Uniformed Security Guard Services / Resolution 2020-22](#)

3. GM REPORT

- 3.1 [Updates](#)

4. ISSUES FOR DISCUSSION

5. OTHER DISCUSSION

- 5.1 CCU Rules Update

6. DIVISION REPORTS

- 6.1 [Administration: Customer Service, HR, Procurement, Safety](#)
- 6.2 [Communications](#)
- 6.3 [Engineering & Technical: Engineering, IT, Planning & Regulatory, SPORD](#)
- 6.4 [Finance](#)
- 6.5 [Operations: Facilities, Generation, PSCC, T&D, Transportation](#)

7. ANNOUNCEMENTS

- 7.1 Next Meeting: CCU Meeting- October 20, 2020

8. ADJOURNMENT

GPA EPCM Project Summary

- August 2020



Summary

- PUC funding approved to date
- Expenditures to date
- Work completed to date
- Work to be completed



PUC Approved Funding

Total PUC approved funding to date for EPCM services \$3,750,000

- PUC approved \$750,000 October 2016
- PUC approved \$600,000 March 2018
- PUC approved \$2,400,000 December 2018

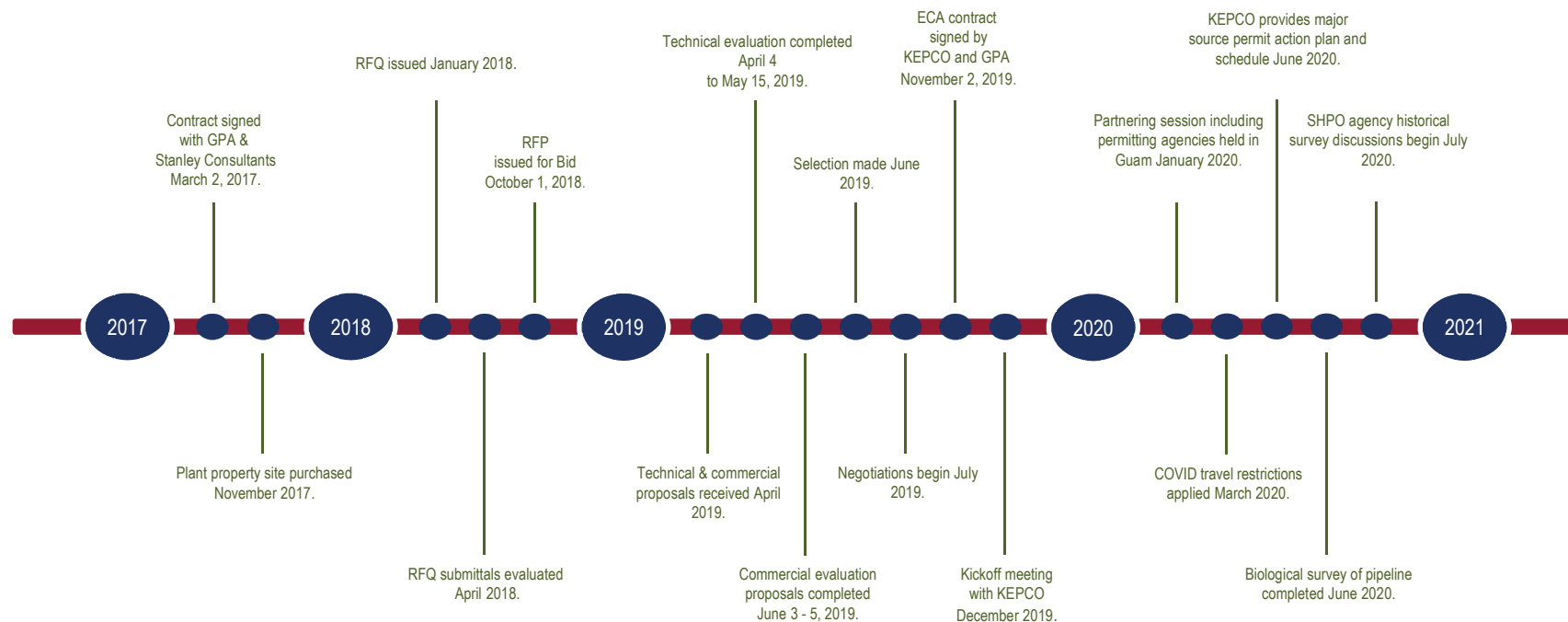


EPCM Expenditures

- Expenditures to date
 - \$3,023,249
 - Remaining of PUC approved \$3,750,000
 - \$726,751
 - Average billing per month over forty one month history
 - \$73,737
 - Average billing per month over last seven months
 - \$131,500
 - The remaining \$726,751 will last until January 2021



Major Milestones Completed



Work Completed

- Contract signed with GPA & Stanley
 - March 2, 2017 five year term with three year base and two year options
- Specialized subcontractors to Stanley
 - K&M Advisors commercial support March 2017
 - Pond pipeline technical support March 2017
 - EA/Ganda Guam environmental and historical March 2017 for plant property
 - EPS review proposals compliance with specified system dynamic requirements November 2018
 - PBS plant property noise analysis December 2018
 - EPS provide updated system dynamic study for new plant July 2019
 - EA/SEARCH November 2019 for pipeline historical survey
 - Ventura Consulting Group January 2020



Work Completed: Qualification Phase

- First draft documents and ECA transmitted for GPA review June 2017
- RFQ draft submitted to PUC for review September 2017
- PUC RFQ comments received November 2017
- RFQ published in January 2018 soliciting responses
- Seventeen RFQ submittals evaluated April 2018
- Recommendation issued April 2018 for seven qualified respondents to receive the RFP package



Work Completed: Bid Phase

- RFP documents approved by GPA June 2018
- RFP documents submitted to CCU for review July 2018
- RFP documents submitted to PUC for review August 2018
- PUC approval September 2018
- RFP issued for Bid October 1, 2018



Work Completed: Bid Phase

- Technical and commercial proposals received from four respondents April 4, 2019
- Technical evaluation completed May 15, 2019
- Commercial evaluation of three proposals completed June 6, 2019
- Selection made GPA project team June 8, 2019
- Protest filed - June 14 -delayed negotiations - developed response - was dismissed



Work Completed: Contract Award Phase

- Negotiations begin July 2019
- ECA submitted to PUC for approval September 2019
- Approved October 31, 2019 by PUC
- ECA contract signed by KEPCO and GPA November 2, 2019



Work Completed: Project Initiation Phase

- Kickoff meeting with KEPCO December 10, 2019
 - Weekly permitting calls established
 - Weekly KEPCO GPA status calls established
- Partnering session including permitting agencies held in Guam January 29 and 31, 2020
- COVID travel restrictions applied March 2020 - Gov Guam agencies were shut down



Work Completed: Project Permitting Phase

- KEPCO provide initial emission calculations for review January 30, 2020
- KEPCO determined that minor source permit would limit the operating hours for combined cycle unit
- Alternate sites for diesel engines evaluated by SCI & GPA



Work Completed Project Permitting Phase

- KEPCO decides to pursue major source air permit beginning end of May 2020
- KEPCO provides major source permit action plan and schedule for review June 2020
- Biological survey of pipeline completed June 2020
 - Endangered snail colonies (27) and endangered plants found
 - Will require mitigation
- Air monitoring plan submitted by KEPCO for EPA review August 2, 2020

Future SCI Support Services Scope

Work Group 11 Project Management and Administration

- Facilitate coordination, communication and documentation between KEPCO, GPA & GWA
- Monitor and Facilitate Permitting Progress
 - Continue to monitor progress on permitting schedule weekly
 - Continue to facilitate and monitor permits (more than 20 total)
- Monitor and facilitate KEPCO & GWA interface on water treatment issues



Future SCI Support Services Scope

Work Group 12 Subcontractors

- EA/SEARCH cultural survey scope significant to comply with requirements along with workload and COVID-19 challenges
- K&M ECA contract review and interaction to support interpretation questions from KEPCO
- EA environmental support for permitting

Future SCI Support Services Scope

Work Group 13 Project Support

- Permitting support
 - Review submitted permit calculations for completion, accuracy
 - Review submitted permit calculation for assumptions to determine if assumptions are in accordance with contractual requirements
 - Review permit schedule for completeness, accuracy and feasibility
 - Review permit process risks and manage risks for avoidance when possible and mitigate when necessary
- Permitting agencies inquiry and coordination



Environmental Permitting

- Air permitting
- Biological resources approval
- Cultural resources approval
- EIA approval
- Additional preconstruction permits

Air Permit

- US EPA and Guam EPA approvals
- Major source permit
 - Preconstruction monitoring
 - Dispersion modeling analyses
 - BACT analysis
 - Public hearings
- A Lengthy Process. Approval is required before Financial close can proceed
- Air permit is current schedule critical path

Biological Resources Approvals

Permitting agencies involved:

- US Army Corp of Engineers
- US Fish & Wildlife
- Guam Department of Agriculture

Completed surveys:

- Wetlands
- Threatened and endangered species
 - Twenty seven snail colonies found on pipeline route
 - Two endangered plants species found
- Surveys completed, permit determinations are ongoing
 - Mitigation will be needed to be coordinated with design and construction
 - Provide verification that mitigation is provided.

Biological Surveys are secondary project critical path




Cultural Resources Approvals

- Addressing approval requirements in two parts
 - Geotechnical boring monitoring
 - Survey of route
- There are known sensitive historical sites along the pipeline route
- Close coordination and approval of SHPO necessary and time sensitive
 - Facilitate communication and monitor progress weekly

EIA Approvals

Required approvals prior to construction

- Local Guam EPA requirements
 - Assessment of impacts for multiple resources, i.e. 
 - Natural resources (wetlands and species)
 - Cultural resources
 - Air quality
 - Social impacts (infrastructure, cost of living, quality of life)
 - Water quality
 - Solid/hazardous waste
- Completion of EIA document is dependent on substantial completion of individual permits requirements
- EIA approval is required before Financial Closing process can proceed

Additional Pre-Construction Permits

- Height variance Guam Land Use commission
- Storm water construction permits Guam EPA
- Building permit DPW
- FAA obstruction evaluation
- Bureau of Statistics Coastal program consistency review
- Effects of Visa requirements TBD
- GWA pretreatment permit
- Guam EPA dewatering permit
- Landfill permit/contract

-Facilitate coordination and monitor progress weekly



Cost impacts

- Extended duration for project
- Sub contractors added under Stanley providing specialized services
- Additional required oversight and coordination with IPP contractor and their support team
- Increased complexity and duration for permitting process (PSD permit, SHPO process, Navy role, wetlands, snails)

Value of Continuing SCI EPCM Support Services

- Ongoing EPCM support services are required to ensure that KEPCO and their subcontractors perform appropriately to meet the permitting schedule dates
- Continuity of service, understanding of the ECA and appropriate coordination with GPA and subcontractor
Extensive experience with USEPA Region IX and GEPA
- Since 2017, Stanley project team has applied established PMP practices to help GPA manage procurement, KEPCO's scope, critical path schedules and project risks

Value of Continuing SCI EPCM Support Services

- Full integration with GPA's energy portfolio - depth of project management and technical capability
- Working relationships with Navy and Guam Stakeholder agencies
- Specifically experienced with Korean EPC contractors
- Versatile team that can work hand-in-glove with GPA to minimize change orders from KEPCO - example water treatment change in law

EPCM Objectives

- Assist GPA with oversight of KEPCO's project delivery both schedule and quality
- Protect GPA and ratepayer interests
- Manage risks
- Document progress of works
- Assist GPA in compliance with Consent Decree
- Provide relief for Guam's ratepayers by delivering new generation
- Support the long-term success of GPA-KEPCO partnership
- Facilitate success and limit schedule impacts due to permitting process and lack of planning

Challenges

- Challenging complex project
 - KEPCO has five subcontractors so far to coordinate
 - GWA GPA KEPCO water interface technical issues
- KEPCO's familiarity with US permitting processes
- Coronavirus
- Permitting
 - More than twenty agencies involved in permitting
- COVID-19 impacting Agencies responsiveness
- Project life cycle including 25 year operational period with performance guarantees

Summary of Value and Benefits

- Help GPA project team on this complex and challenging project by providing needed expertise as arises in all areas of construction including those noted below. GPA last power plant construction project was over 20 years ago.
 - Procurement plan
 - Design engineering schedule
 - Construction schedule
 - Quality assurance plan
 - Environmental permits design and construction compliance verification



GUAM POWER AUTHORITY
ATURIDÂT ILEKTRESEDÂT GUAHAN
P.O.BOX 2977 • AGANA, GUAM U.S.A. 96932-2977

Issues for Decision

Resolution No. 2020-20:

RELATIVE TO: AUTHORIZATION OF CONTRACT INCREASE FOR ENGINEERING, PROCUREMENT, AND CONSTRUCTION MANAGEMENT THRU MARCH 2022

What is the project's objective? Is it necessary and urgent?

Stanley Consultants were contracted to provide engineering and technical support for the new power plant bid, contract development and as GPA's owner's engineer during the permitting and construction of the plant. GPA had obtained prior approvals for estimated budget prior to the award of the new power plant to KEPCO. However, since then the support required has increased due to type of technology, increased efforts and support during procurement and negotiations, and permitting discussions. The projected budget is thru Stanley's fifth contract year ending in March 2022.

Where is the location?

The new power plant will be located in the GPA owned property in Ukudu.

How much will it cost?

The requested cost increase for the Stanley contract is \$2.25 million for a total contract amount of \$6M. This is approximately 1% of the new power plant cost.

When will it be completed?

This funding request is to cover activities through the contract's fifth contract year ending in March 2022.

What is its funding source?

Cabras 3 & 4 Insurance Proceeds



CONSOLIDATED COMMISSION ON UTILITIES
Guam Power Authority | Guam Waterworks Authority
P.O. Box 2977 Hagatna, Guam 96932 | (671)649-3002 | guamccu.org

RESOLUTION NO. 2020-20

**RELATIVE TO AUTHORIZATION OF CONTRACT INCREASE FOR ENGINEERING, PROCUREMENT,
AND CONSTRUCTION MANAGEMENT THRU MARCH 2022**

WHEREAS, Stanley Consultants was selected through GPA RFP-17-001 as the Engineering, Procurement and Construction Management (EPCM) Contractor for the New 120-180 MW Power Plant in March 2017; and

WHEREAS, in October 2016 the PUC Docket 17-06¹ approved the initial funding of \$750,000 for the procurement development of the new power plant from 2014 Bond Funds – LNG Startup Bond Project; and

WHEREAS, in March 2018 the PUC Docket 18-09² approved an increase of \$600,000 to the contract to complete procurement document development and solicitation support as well as to initiate land studies of the Ukudu site for bid documents; and

WHEREAS, in November 2018 the PUC Docket 18-09³ approved an increase of \$2.4M projected services to complete procurement support and to provide owner's engineer support during construction and commissioning from 2019 thru 2022; and

WHEREAS, GPA issued the Multi-Step Bid for the 180MW Power Plant on October 1, 2018. Technical and price proposals were received in April 2019. A final selection was made in June 2019. After contract negotiations and CCU and PUC approvals the contract was signed on November 5, 2019; and

WHEREAS, Stanley provided necessary support of the bid process which included providing biological, archaeological and noise studies at the plant site, responding to bidder inquiries and clarifications, evaluating technical and price proposals and addressing protest claims; and

¹ CCU Resolution No. 2015-21, Relative to Approval of Consulting Services for USEPA Compliance Plan, approved on March 24, 2015.

² CCU Resolution No. 2018-05, Relative to Authorization of Increase for Engineering, Procurement, and Construction Management Contract Amount, approved on March 29, 2018.

³ CCU Resolution No. 2018-25, Relative to Authorization of Increase for Engineering, Procurement, and Construction Management Contract Amount thru 2022, approved on October 19, 2018.

26 **WHEREAS**, upon selection of bidder, Stanley lead contract negotiations which firmed up
27 technical requirements and commercial terms and continues to provide contract management; and

28 **WHEREAS**, based on verified average monthly costs estimates for contract services thru
29 March 2022 will exceed the current approved budget in January 2021. A summary of funding and
30 invoices is provided in **Attachment A**; and

31 **WHEREAS**, GPA still requires Stanley support to meet key milestones and most especially
32 address technical issues prior to financial close; and

33 **WHEREAS**, GPA has projected additional costs for the Stanley EPCM contract thru March 2022
34 totaling \$2.25M which would increase the total contract amount to \$6M with an allowance for a 20%
35 contingency; and

36 **WHEREAS**, the new total contract amount is 1% of the \$600M plant project cost and is within
37 a reasonable percentage (1%-3%) for similar contracts; and

38 **WHEREAS**, the funding source for the additional contract costs will be from Cabras 3 & 4
39 Insurance proceeds; and

40 **WHEREAS**, the EPCM contract terminates in March 2022 and as such, GPA will solicit for
41 Construction Management by August 2021 to assist GPA in reviewing and monitoring construction
42 progress of the new power plant; and

43 **WHEREAS**, the increased contract cost exceeds the GPA General Manager's approval
44 authority.

45 **NOW, THEREFORE, BE IT RESOLVED, by the CONSOLIDATED COMMISSION ON UTILITIES, the**
46 **GOVERNING BODY of the GUAM POWER AUTHORITY as FOLLOWS:**

- 47 **1.** The CCU authorizes GPA to increase the Stanley EPCM contract by \$2.25M for consulting and
48 technical services through March 2022 to be funded through Cabras 3 & 4 insurance proceeds
49 for a contract total of \$6M.
- 50 **2.** The CCU authorizes the GPA General Manager to petition the PUC for approval to increase the
51 Stanley EPCM contract by \$2.25M for consulting and technical services through March 2022.

52 **RESOLVED**, that the Chairman of the Commission certifies and the Board Secretary attests the adoption
53 of this Resolution.

DULY and REGULARY ADOPTED AND APPROVED THIS 20th DAY of OCTOBER, 2020

Certified by:

Attested by:

JOSEPH T. DUENAS

Chairperson
Consolidated Commission on Utilities

MICHAEL LIMTIACO

Secretary
Consolidated Commission on
Utilities

I, Michael Limtiaco, Secretary for the Consolidated Commission on Utilities (CCU), as evidenced by my signature above do certify as follows:

The foregoing is a full, true, and correct copy of the resolution duly adopted at a regular meeting of the members of Guam Consolidated Commission on Utilities, duly and legally held at the meeting place properly noticed and advertised at which meeting a quorum was present and the members who were present voted as follows:

Ayes: _____

Nays: _____

Absent: _____

Abstain: _____

GPA Work Session - October 15, 2020 - ISSUES FOR DECISION

	Approved Funds	PUC Order	Funding Source
Initial Budget	\$ 750,000.00	Docket 15-05, 10/27/16	2014 Bond Funds (LNG Initial Startup)
Funding Increase #1	\$ 600,000.00	Docket 18-09, 3/29/18	Revenue Funds
Funding Increase #2	\$ 2,400,000.00	Docket 18-09, 11/29/18	Cab3&4 Insurance Proceeds
Total:	\$ 3,750,000.00		

Summary of Invoices & Funding by Year:

Year	Authorized Funding	Invoice Totals	Amount Available	Balance	Notes
2017	2014 Bond Funds (LNG)	\$ 508,936.28	\$ 750,000.00	\$ 241,063.72	
2018	2014 Bond Funds (LNG)	\$ 240,991.32	\$ 241,063.72	\$ 72.40	Balance of Bond Funds
	Revenue Funds	\$ 396,079.81	\$ 600,000.00	\$ 203,920.19	
2019	Revenue Funds	\$ 133,575.34	\$ 203,920.19	\$ 70,344.85	Balance of Revenue Funds
	Cab3&4 Insurance Funds	\$ 823,439.52	\$ 2,400,000.00	\$ 1,576,560.48	
2020*	Cab3&4 Insurance Funds	\$ 1,023,499.89	\$ 1,576,560.48	\$ 553,060.59	Balance of C34 Insurance Funds

Total \$ 3,126,522.16

4 Months of Contract Services based on \$125K on Balance of Funds

Summary of Invoices and Funding by Funding Source:

Authorized Funding	Invoice Totals	Amount Available	Balance
2014 Bond Funds (LNG)	\$ 749,927.60	\$ 750,000.00	\$ 72.40
Revenue Funds	\$ 529,655.15	\$ 600,000.00	\$ 70,344.85
Cab3&4 Insurance Funds	\$ 1,846,939.41	\$ 2,400,000.00	\$ 553,060.59

Total \$ 3,126,522.16

RESOLUTION 2020-22

1

Relative to Exercising Renewal Options for Unarmed Uniformed Security Guard Services

What is the project's objective? Is it necessary and urgent?

The services are necessary and urgent in order to ensure physical security and protection of the island's critical electric infrastructure, GPA employees and customers. These services are a critical component of the Authority's Comprehensive Security Strategy

Where is the location?

Onsite and/or roving services are provided at various critical GPA facilities, including but not limited to generation plants, substations, energy storage batteries, warehouses, system dispatch, operations, and customer service centers. Contract also includes remote monitoring and breach response.

How much will it cost?

Maximum total cost for full option periods is \$2,046,701.80

When will it be completed?

End of final option period is May 31, 2022

What is its funding source?

O&M funds

The RFP/BID responses:

GPA-051-19: Pacific Island Security Agency (lowest base bid & overall price) & G4S



PHYSICAL SECURITY: Comprehensive Security Strategy

2

ACTIVITY HIGHLIGHTS

2014	Assessment of Entries & ACS (Black & Veatch)
2015	Physical Security & ACS Policy Implemented
2017	GHS & DHS Cooperative Agreement
2018	Secret Security Clearance Granted (SA)
	Physical Security Steering Comm Established
	<i>Authorized Protected Critical Infrastructure Information</i> Certification Obtained (SA)
	DHS Assessment of 56 GPA Key Sites
2019	Mariana Regional Fusion Center Engaged to Respond to GPA Security Breaches
	GPA Asset Physical Priority Listing & Criticality Tier Designation Established
	DHS Infrastructure Survey Dashboard for GPA Released
2020	Physical Security Projects Underway

KEY ONGOING PHYSICAL SECURITY PROJECTS

- ✓ **DHS IST Dashboard**
 - *Updating information*
- ✓ **GPWA Physical Security Proof of Concept**
 - *Bid under review*
- ✓ **Security CCTV & Monitoring Center**
 - *Security Command Center installed; training pending*
 - *CCTV installations at designated critical facilities 90% complete*
- ✓ **ACS & Entry Hardening**
 - *Ongoing at designated critical facilities*
- ✓ **GPA-GHS MOA**
 - *Routed for signatures*





CONSOLIDATED COMMISSION ON UTILITIES
Guam Power Authority | Guam Waterworks Authority
P.O. Box 2977 Hagatna, Guam 96932 | (671)649-3002 | guamccu.org

Resolution No. 2020-22

**RELATIVE TO AUTHORIZING THE GUAM POWER AUTHORITY TO CONTINUE TO EXERCISE OPTION TO
RENEW PROVISION FOR UNARMED UNIFORMED SECURITY SERVICES**

WHEREAS, Guam's Island-Wide Power System is critical infrastructure whose assets, systems, and networks, whether physical or virtual, are considered so vital to the island community, military and nation that the incapacitation or destruction thereof would have a debilitating effect on readiness, economic security, public health or safety, or any combination thereof; and

WHEREAS, the Guam Power Authority utilizes unarmed security guard services to protect its assets, employees and customers during and after duty hours, as part of its overall security strategy; and

WHEREAS, GPA, in partnership with the Guam Homeland Security, Department of Homeland Security, and other entities, is developing a comprehensive Security Strategy and Plan which will encompass local, federal and industry requirements and address reasonable threats and risks; and

WHEREAS, GPA's firm requirements for unarmed, uniformed security guard services will be determined by such Security Strategy; and

WHEREAS, a solicitation for Physical Security Proof of Concept is actively under review for formal risk and vulnerability assessments, and security services of select power, water and wastewater assets; and

WHEREAS, the Physical Security Proof of Concept services will link existing security assessments and attainable technology to complete the comprehensive Security Strategy; and

WHEREAS, in April 2019, GPA issued IFB GPA-051-19 seeking unarmed, uniformed security guard services for key assets and locations with options to enhance security measures within the contract period dependent on resource availability and readiness; and

WHEREAS, on June 5, 2019, the Consolidated Commission on Utilities (CCU) approved a \$1.2M spending authorization for contracted unarmed, uniformed security guard services via Resolution 2019-09; and

WHEREAS, GPA awarded and entered into the first base year contract with Pacific Island Security Agency (PISA) at the cost of \$806,916.60 for the term of June 2019 to May 2020, with exercised options

1 to include a portion of the first renewal option year from June 2020 and to expire October 31, 2020 at the
2 cost of \$351,394.65 for a grand total of \$1,158,311.25; and

3 **WHEREAS**, GPA has employed certain technologies and agreements to reduce unarmed, in-
4 person physical security services at certain locations resulting in increased security efficiencies and
5 reduced costs; and

6 **WHEREAS**, the FY2021 budget for Unarmed Uniformed Security Guard Services has been
7 approved at \$1,147,500; and

8 **WHEREAS**, GPA will have reached the \$1.2M spending authorization as approved by the CCU via
9 Resolution 2019-09 by October 31, 2020; and

10 **WHEREAS**, the option to extend the security services under the current contract is advantageous
11 to GPA as the demand for unarmed, uniformed security services has increased during the ongoing SARS-
12 CoV-2 (COVID-19) pandemic; and

13 **WHEREAS**, GPA seeks CCU and PUC approval to continue services with under IFB GPA-051-019
14 and exercise the remaining eight (8) months in the first-year option, and the full second year option
15 through May 31, 2022 for a maximum cost of \$2,046,701.80 subject to availability of funds as summarized
16 in **Exhibit A**; and

17 **WHEREAS**, the renewal and total cost of services is in the best interest of GPA and its ratepayers
18 based on the initially awarded multi-year base contract that encouraged competitive bids at lowest cost.

19
20 **NOW, THEREFORE, BE IT RESOLVED, by the CONSOLIDATED COMMISSION ON UTILITIES,**
21 **the GOVERNING BODY of the GUAM POWER AUTHORITY and SUBJECT TO THE REVIEW AND**
22 **APPROVAL OF PUC AS FOLLOWS:**

- 23 1. After careful consideration, the CCU finds that the continuance to exercise options to renew
24 the contracting for security for GPA properties is reasonable, prudent and necessary.
- 25 2. The General Manager of GPA is hereby authorized to continue to exercise the renewal options
26 of the contract for unarmed, uniformed security guard services for a term beginning
27 November 1, 2020 through May 31, 2021, and renewal of the 2nd optional year from June 1,
28 2021 through September 30, 2021, and contractual options to enhance security measures so
29 long as the total contract value does not exceed \$2,046,701.80.

1
2
3
4
5
6
7
8
9
10
11
12
13
14
15
16
17
18
19
20
21
22
23
24
25
26

RESOLVED, that the Chairman certifies and the Board Secretary attests to the adoption of this Resolution.

DULY AND REGULARLY ADOPTED AND APPROVED THIS 20th DAY OF OCTOBER 2020.

Certified by:

Attested by:

JOSEPH T. DUENAS
Chairman
Consolidated Commission on Utilities

MICHAEL T. LIMTIACO
Secretary
Consolidated Commission on Utilities

I, Michael T. Limtiaco, Secretary for the Consolidated Commission on Utilities (CCU), as evidenced by my signature above do certify as follows:

The foregoing is a full, true, and accurate copy of the resolution duly adopted at a regular meeting of the members of Guam Consolidated Commission on Utilities, duly and legally held at a place properly noticed and advertised at which meeting a quorum was present and the members who were present voted as follows:

Ayes: _____

Nays: _____

Absent: _____

Abstain: _____

EXHIBIT A

**CONTRACT SUMMARY
PISA CONTRACT OPTION
11/1/20 thru 5/31/21**

3-Year Contract with all Options	\$3,684,063
CCU Approved Authorization (Resolution 2019-09)	\$1,200,000
Projected Expenditure thru Oct 31, 2020	\$1,158,311
Request Additional Funding Authorization: Resolution 2020-22, (For period Nov 1, 2020 thru May 31, 2021)	\$ 846,702
Total Authorization Needed	\$2,046,702

GM REPORT

October 2020



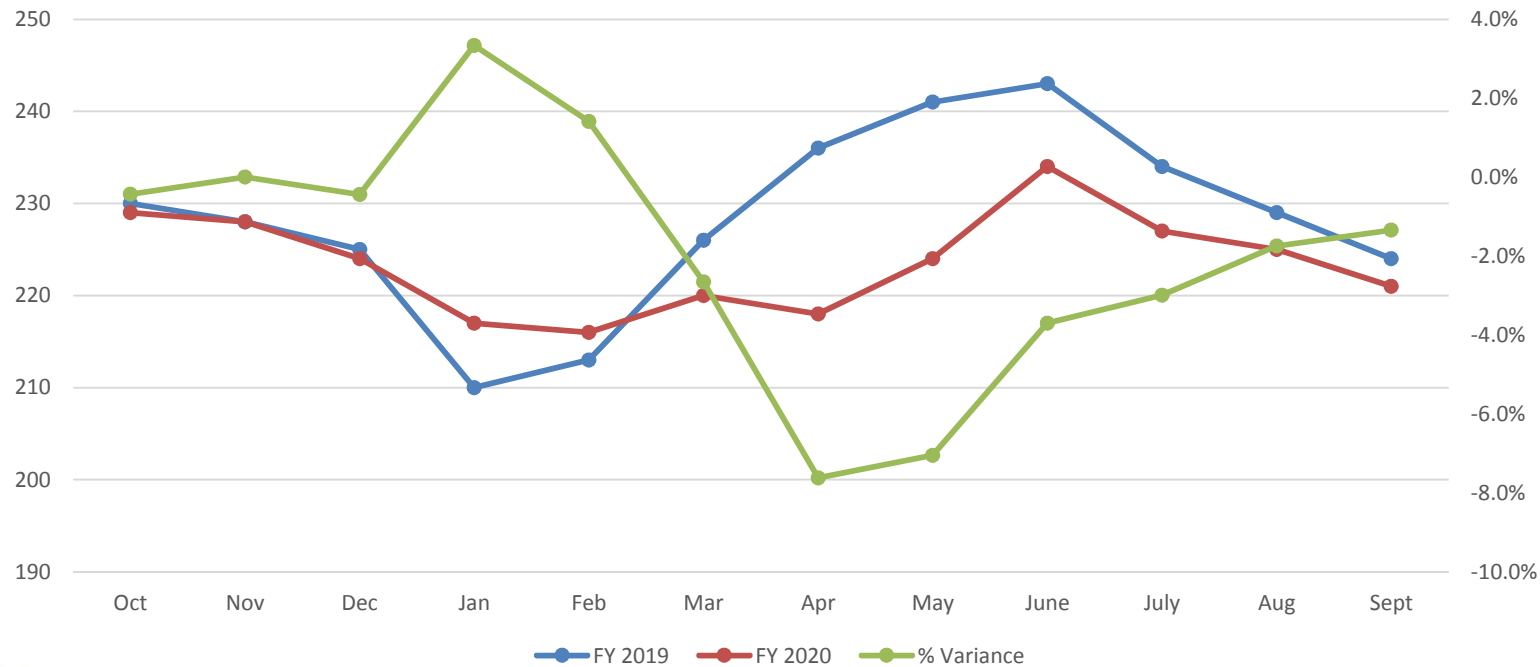
PEAK DEMAND RECOVERING TOWARDS 2019 LEVEL

1. Reserve Margin Forecast for Oct 2020:

Projected Available Capacity: 373 MW
 Projected Demand: 245 MW
 Anticipated Reserve Margin: 128 MW

2. Pandemic's Impact on Peak demand

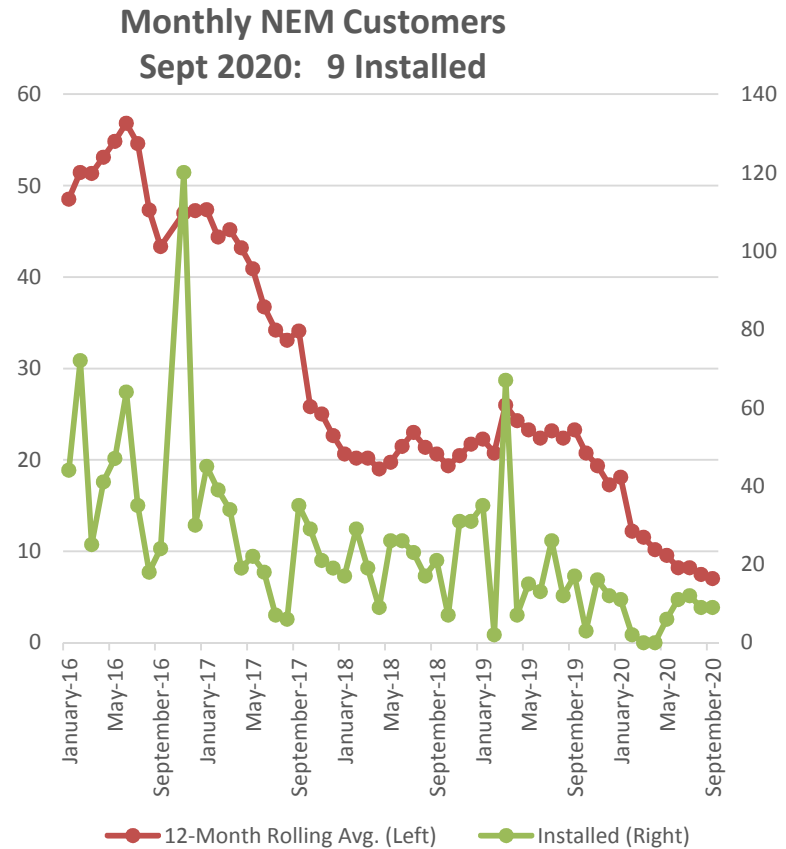
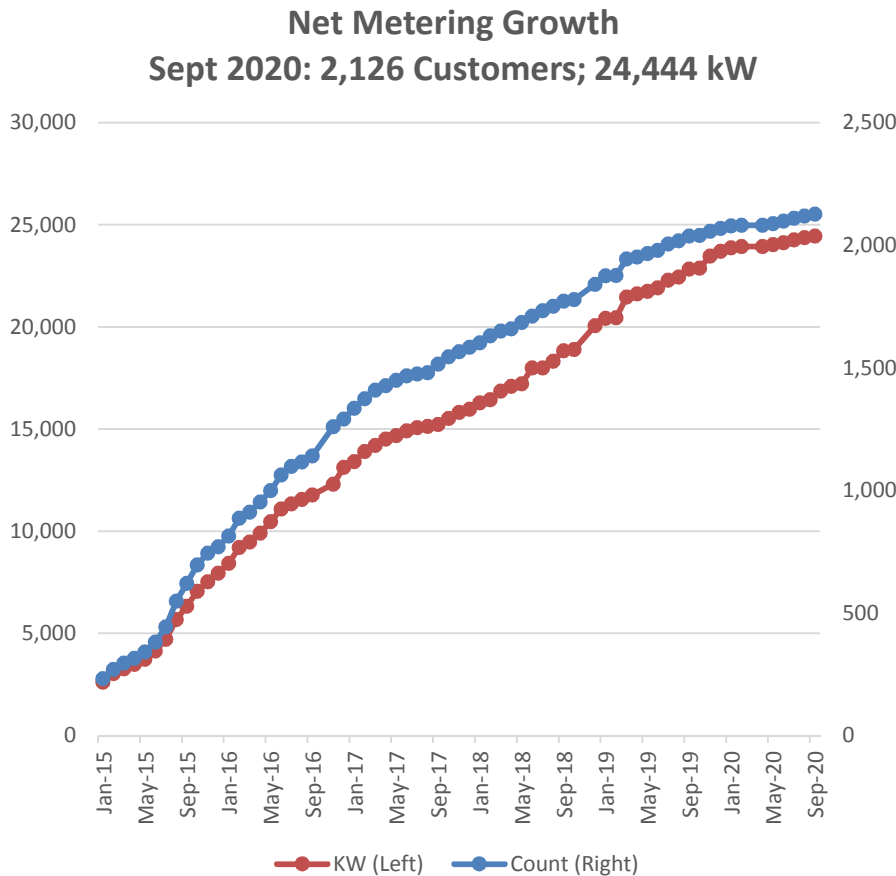
Monthly Average Peak MW Demand
 Comparison of FY 2020 to FY 2019



NET METERING

3

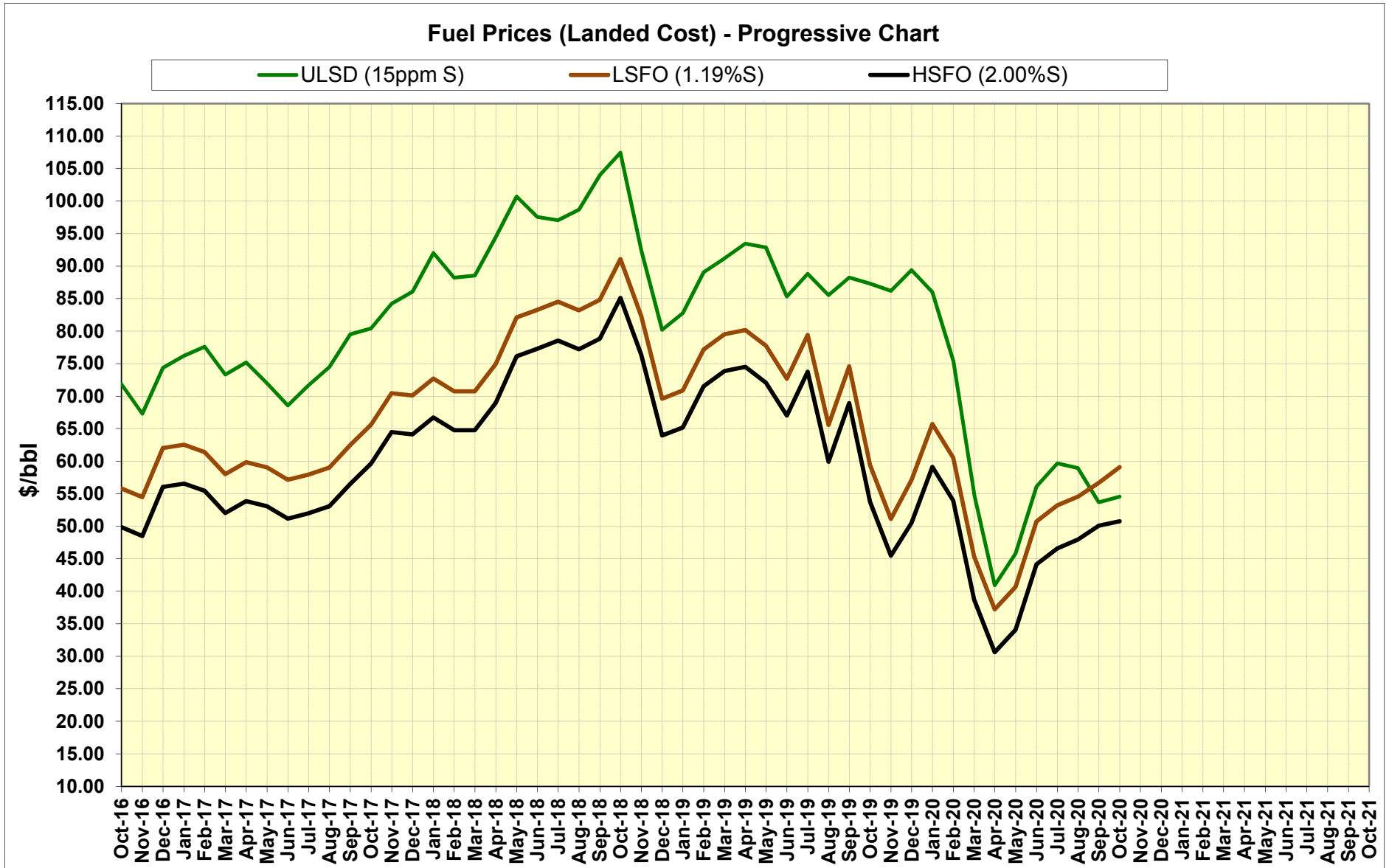
3. Net Metering (NEM) Growth Thru Sept 2020:



GPA Fuel Purchases (Per Barrel)

4

4. Fuel Prices (Per Barrel) Ending Oct 12, 2020



5. Demand Side Management Expenses

Description	FY16	FY17	FY18	FY19	FY20	Total to Date
					As of 9/29/20	
Regular/OT Pay	\$11,348.80	\$22,256.00	\$26,121.83	\$50,715.19	\$45,873.25	\$156,315.07
Other Contractual	\$28,278.50	\$85,550.05	\$116,977.50	\$3,025.00	-	\$233,831.05
Ads & Radio Announcements	-	-	-	\$7,500.00	-	\$7,500.00
Paid Rebates-Split AC	\$154,700.00	\$557,275.00	\$1,349,825.00	\$1,374,650.00	\$1,033,150.00	\$4,469,600.00
Paid Rebates-Central AC	\$3,400.00	\$8,200.00	\$4,400.00	\$6,500.00	\$1,000.00	\$23,500.00
Paid Rebates-Washer/Dryer	\$2,800.00	\$7,425.00	\$57,200.00	\$110,800.00	\$73,600.00	\$251,825.00
Total Expenses	\$200,527.30	\$680,706.05	\$1,554,524.33	\$1,553,190.19	\$1,153,623.25	\$5,142,571.12
Bank Interest (+)	\$1,676.42	\$1,722.74	\$1,222.29	\$730.05	\$426.34	\$5,777.84
Bank Fees	\$155.00	\$1,032.06	\$1,085.08	\$1,247.54	\$325.00	\$3,844.68

**Expenses are preliminary and may be subject to adjustment during reconciliation process.*



General Manager's Report (con't)

6

6. PUC Updates:

- Docket 20-16-Retirement of Piti: **Denied** - Will reconsider upon outcome of negotiations with USEPA to change the consent decree. GPA required to file separate docket on additional renewables.
- Docket 20-18-One Month Extension of Mobil Contract: **Approved**
- Docket 20-19-FY 2021 CIP Ceiling: **Approved**
- Docket 20-20, FY 2021-2023 Construction Budget: **Approved**

7. Public Hearing on Bill 315-35: Relative to Increasing the Aggregate Capacity Limit for Net Energy Measurement Calculations and to Establishing the Rate at which Customer-Generators are to be Compensated.

- On Wednesday, October 07, 2020 a public hearing via zoom meeting was held on Bill 315-35. I provided written testimony indicating GPA is not in support of Bill 315-35. I also provided as an attachment to my written testimony, the bond counsel, Mr. John Wang, Esq. of Orrick's letter opining that the provision of this bill clearly violates GPA's bond covenants.



General Manager's Report (con't)

7

8. Energy Storage System (ESS) Update:

- The ESS projects at both Talofofo and Agana have completed commissioning and energization of interconnection Hardware (Phase I). Talofofo and Hagatna interconnection energization were completed on 8/18/20 and on 9/21/20, respectively.
- Talofofo and Agana Battery Hardware and Software commissioning (Phase II) are on hold until Guam returns to PCOR2. When Phase II commissioning resumes, it will be completed within 4 weeks

9. Phase III Renewables Project Update:

- On September 28th the OPA issued its decision in favor of GPA on the appeal of the bid award to Engie. GlidePath had 14 days to file an appeal of the OPA's decision in the superior court. GlidePath did file an appeal on October 12, 2020. GPA must now wait for the court's decision on the appeal before it can lift the stay and award the bid to Engie for the Phase III renewable project.

10. Customer Satisfaction Survey:

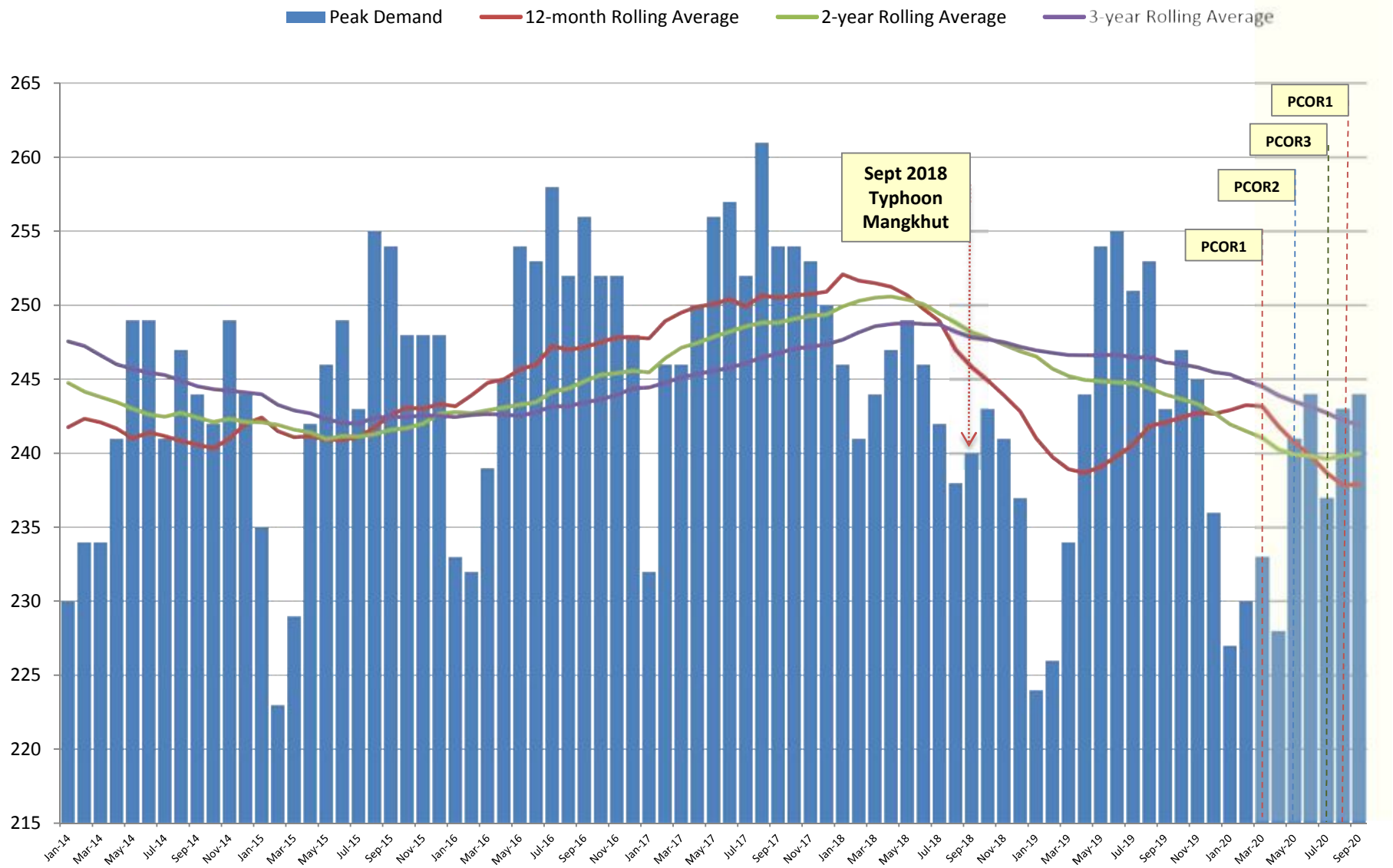
- GPA's Customer Satisfaction Survey will begin this month for both residential and commercial customers.

11. Generation KPI's:

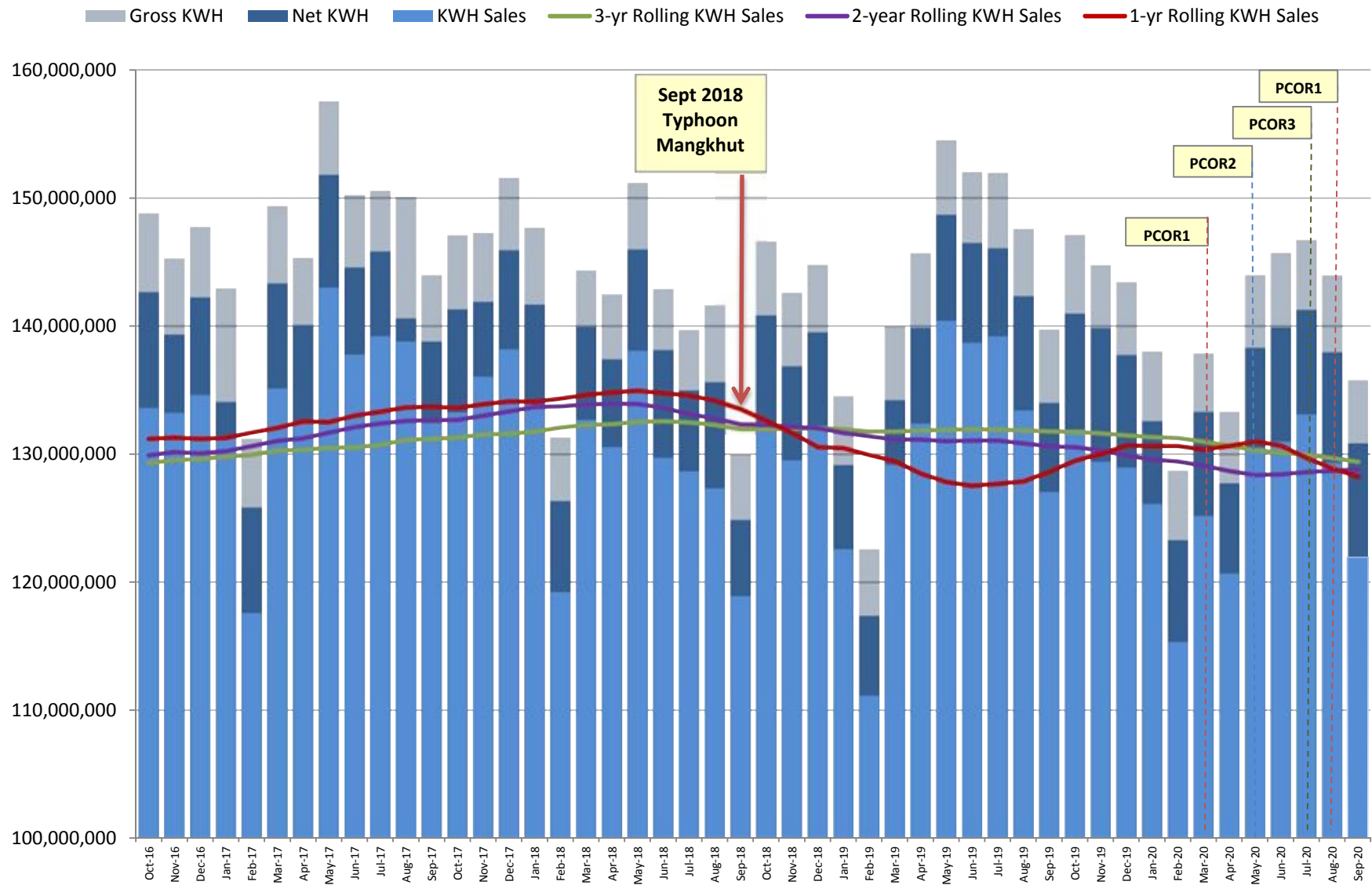
- The following graphs show updated information through September 2020



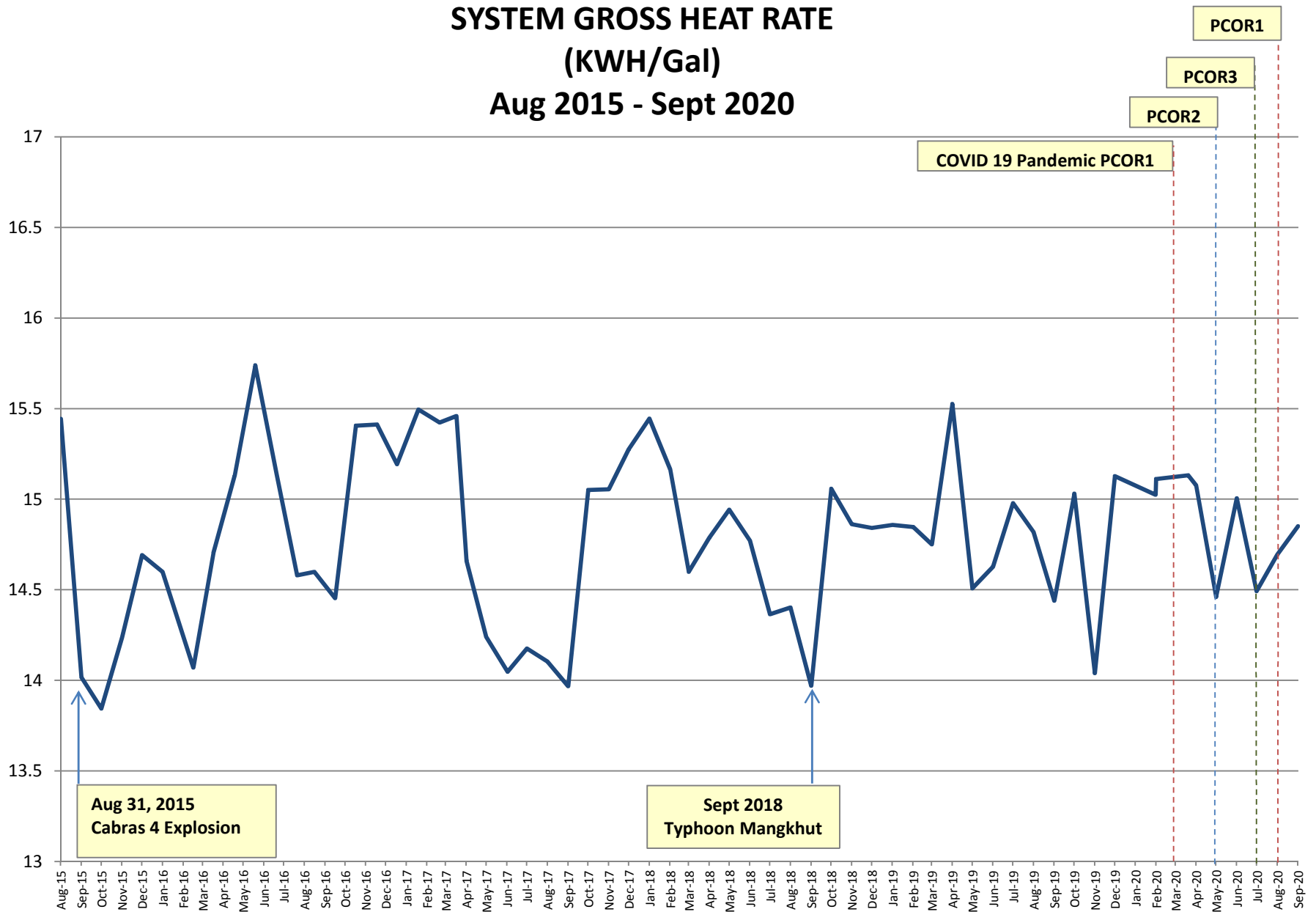
Historical Monthly Peak Demand Jan 2014 - Sept 2020



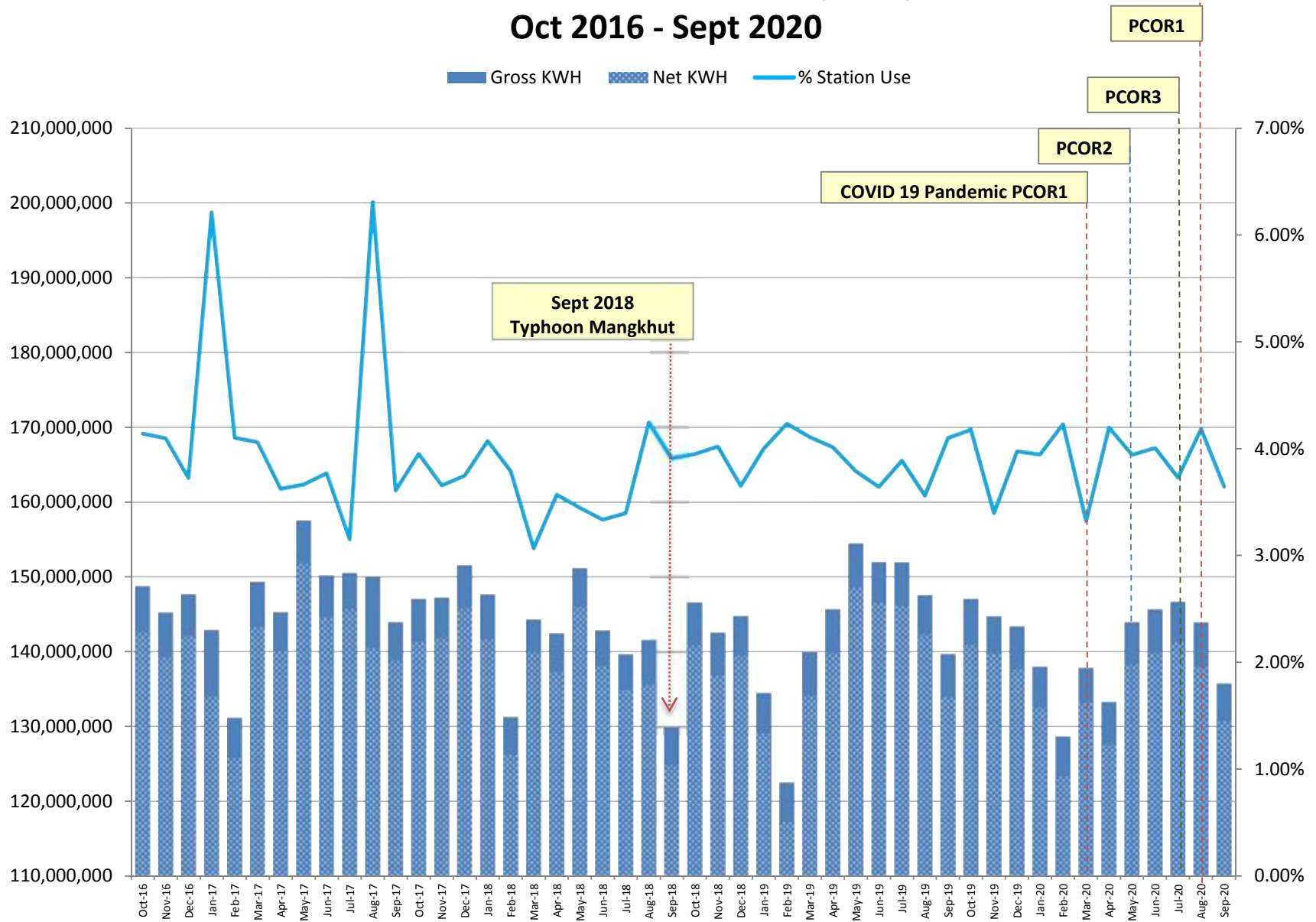
Historical KWH Sales Oct 2016- Sept 2020



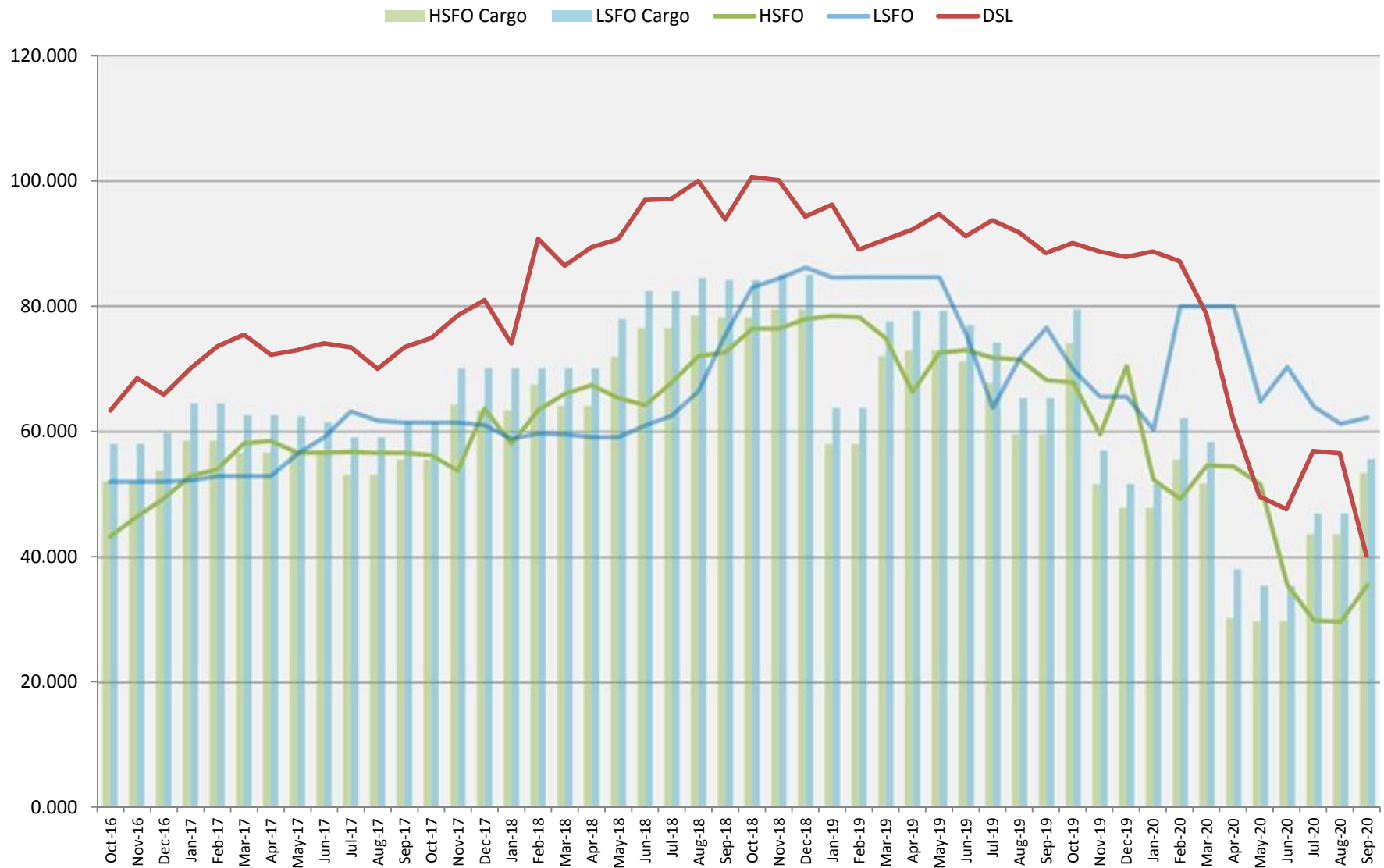
SYSTEM GROSS HEAT RATE (KWH/Gal) Aug 2015 - Sept 2020



Gross and Net Generation (KWH) Oct 2016 - Sept 2020



Fuel Cargo and Fuel Consumption Costs (\$/bbl) Oct 2016 - Sept 2020



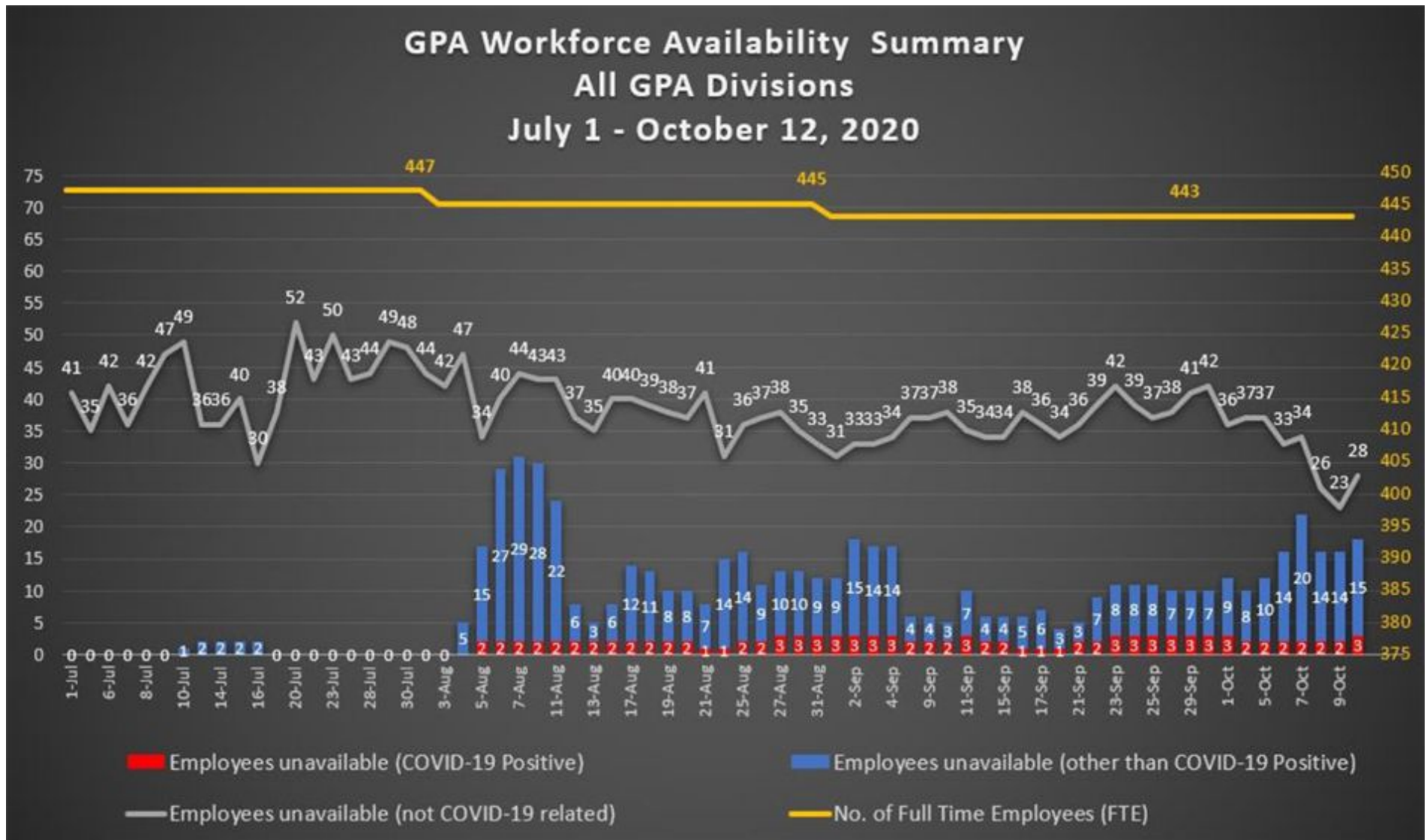
COVID-19 REPORT IMPACT ON GPA OPERATIONS

October 2020



COVID-19 IMPACT - Workforce

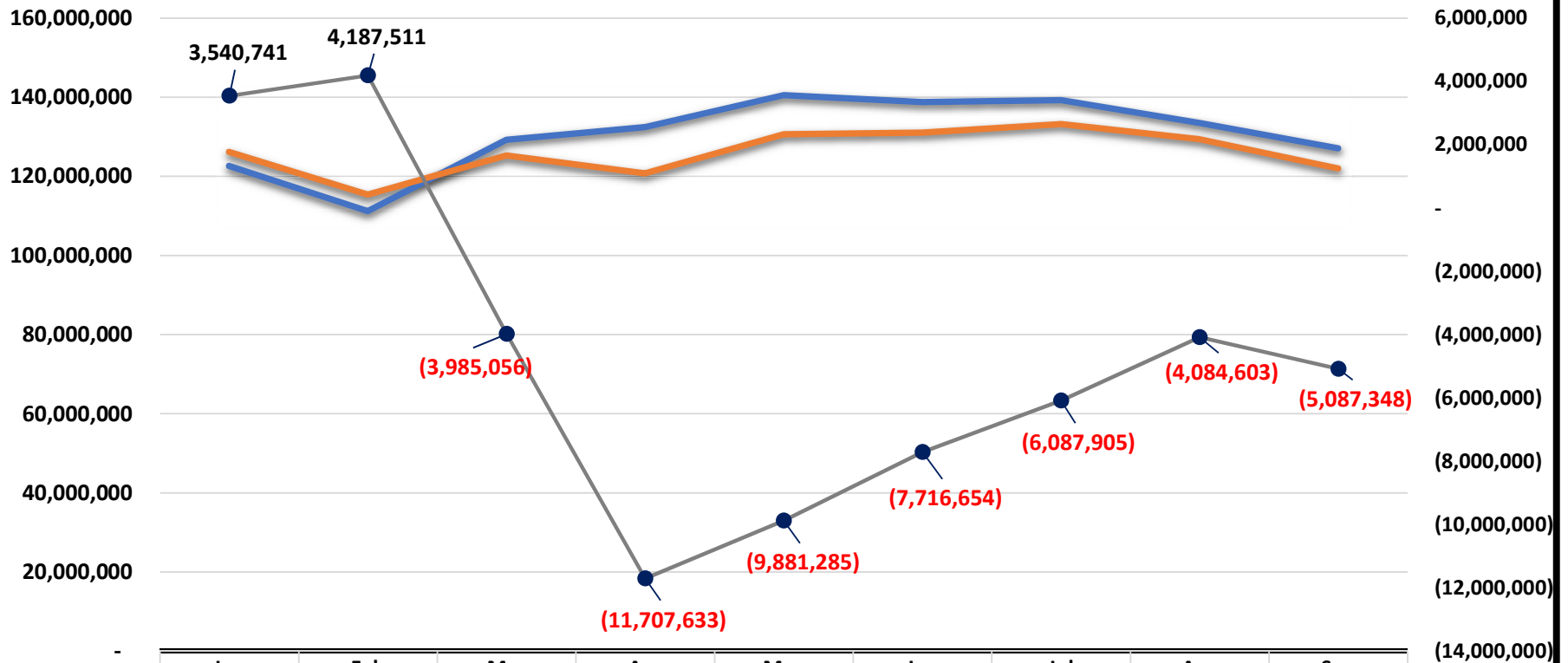
14



OVERALL SALES

15

Overall kWh Sales Trend



	Jan	Feb	Mar	Apr	May	Jun	Jul	Aug	Sep
FY 2019	122,589,564	111,158,952	129,170,318	132,395,702	140,411,830	138,703,568	139,203,828	133,421,884	127,014,068
FY 2020	126,130,305	115,346,464	125,185,262	120,688,068	130,530,545	130,986,913	133,115,922	129,337,281	121,926,720
Variance	3,540,741	4,187,511	(3,985,056)	(11,707,633)	(9,881,285)	(7,716,654)	(6,087,905)	(4,084,603)	(5,087,348)



SHUTDOWN
16-Mar

PCOR 2
10-May

PCOR 3
20-Jul

PCOR 1
16-Aug

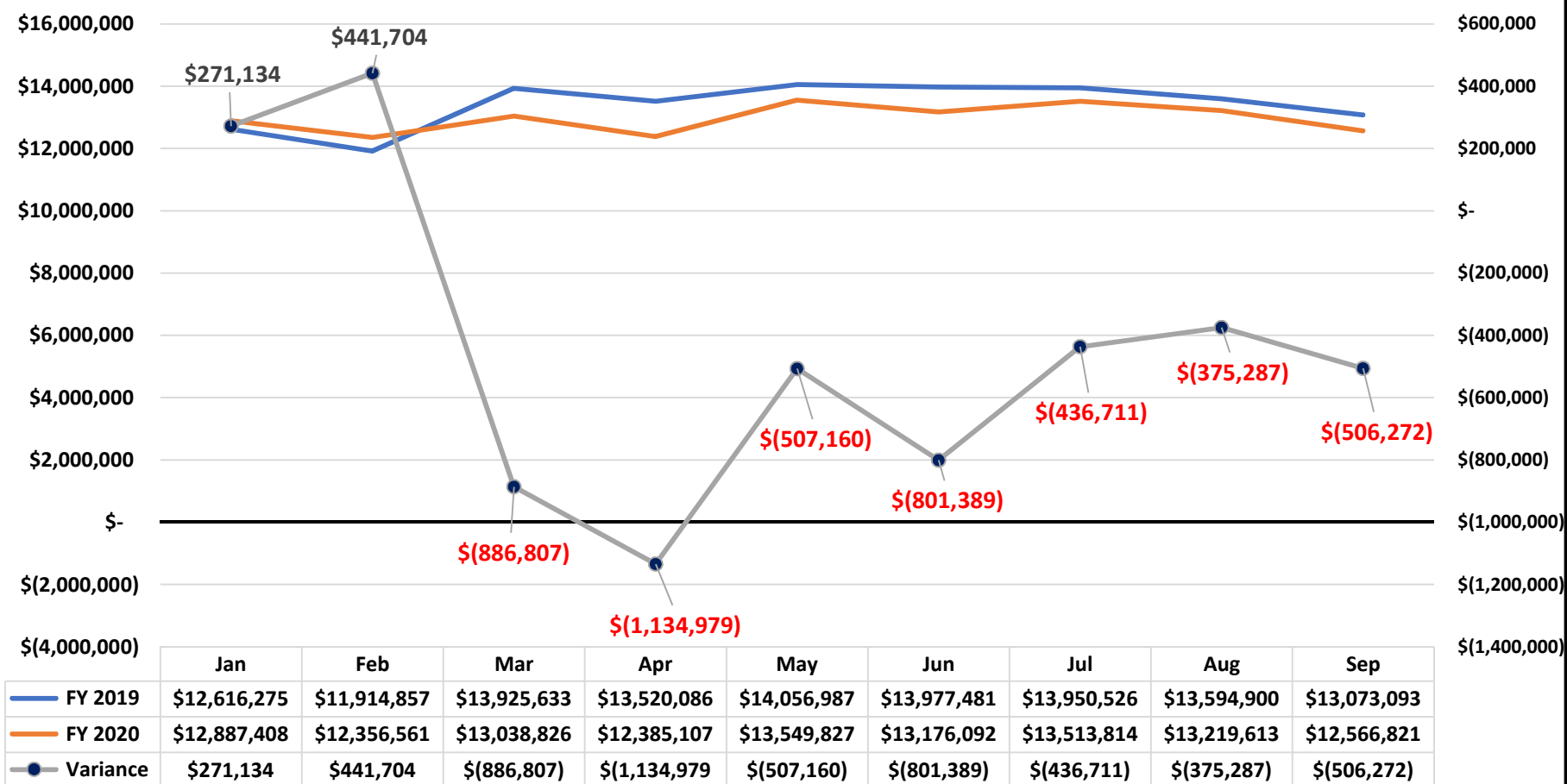
PCOR 1.5
25-Sep



BASE RATE OVERALL REVENUE

16

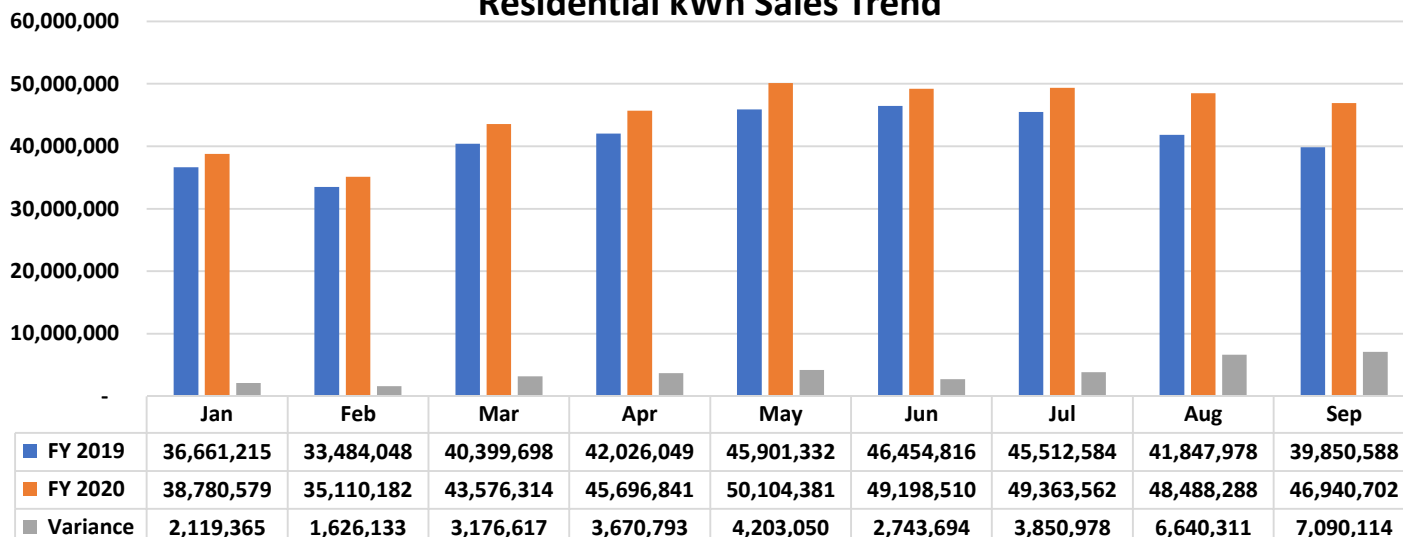
Base Rate Revenue Trend



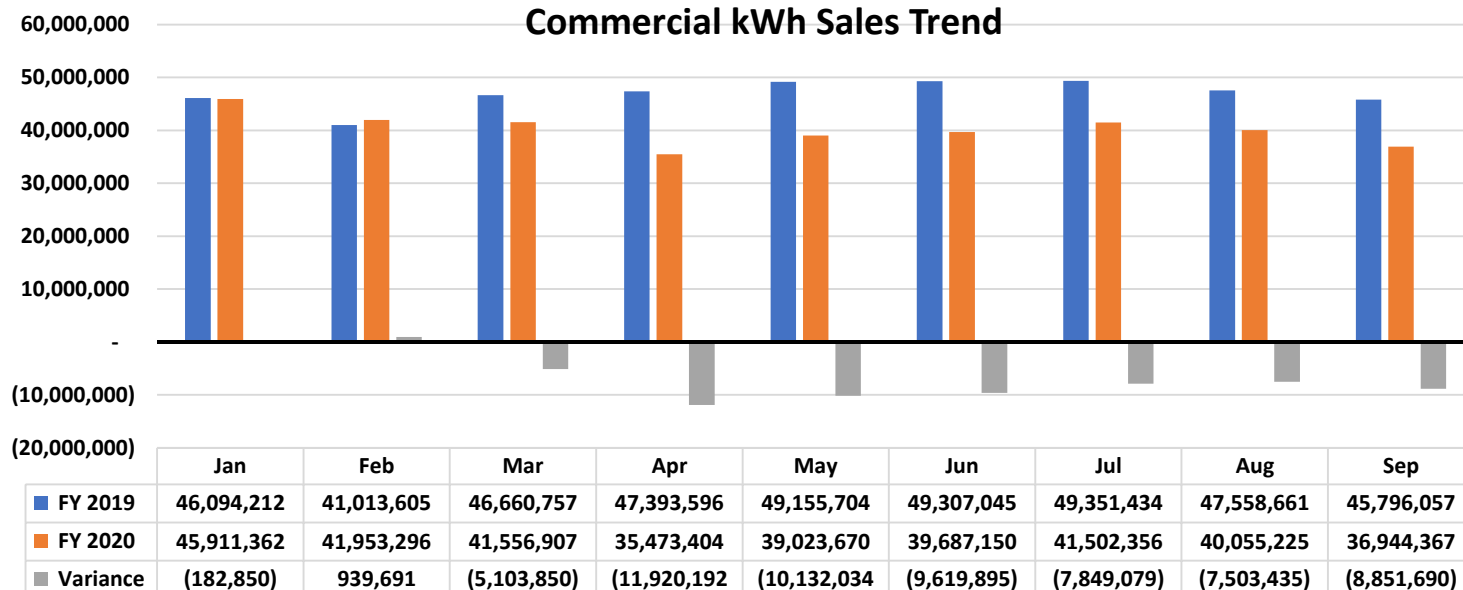
RESIDENTIAL AND COMMERCIAL SALES

17

Residential kWh Sales Trend



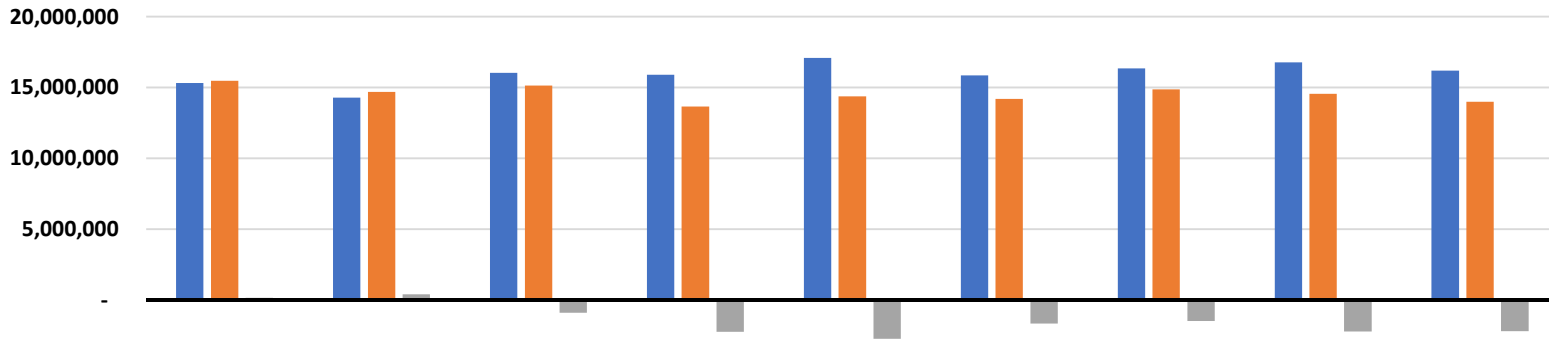
Commercial kWh Sales Trend



GOVERNMENT AND NAVY SALES

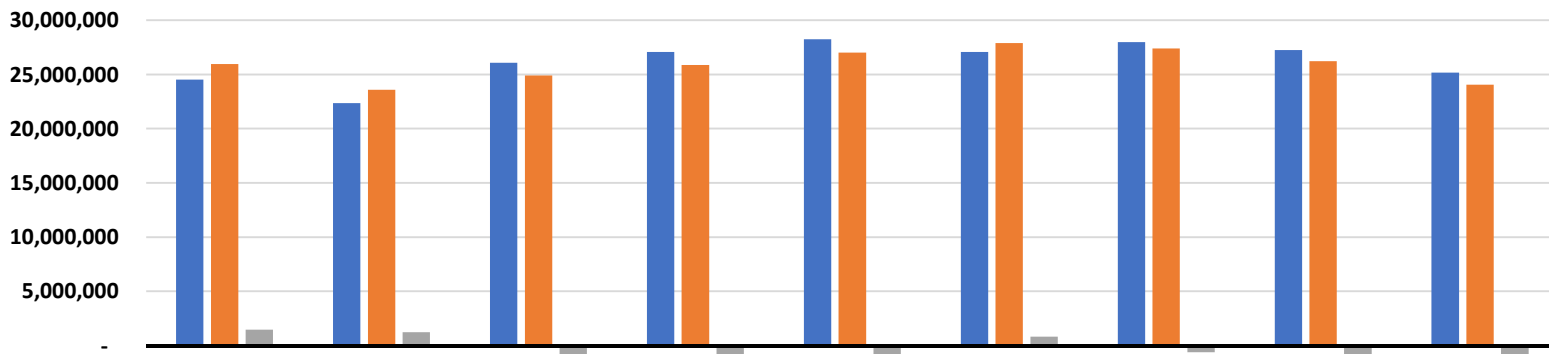
18

Government kWh Sales Trend



(5,000,000)	Jan	Feb	Mar	Apr	May	Jun	Jul	Aug	Sep
FY 2019	15,316,487	14,292,390	16,032,021	15,892,823	17,099,740	15,858,964	16,342,261	16,776,096	16,183,177
FY 2020	15,474,596	14,701,547	15,146,971	13,650,663	14,373,665	14,189,891	14,862,665	14,561,306	13,985,156
Variance	158,108	409,157	(885,050)	(2,242,160)	(2,726,075)	(1,669,074)	(1,479,597)	(2,214,791)	(2,198,021)

Navy kWh Sales Trend

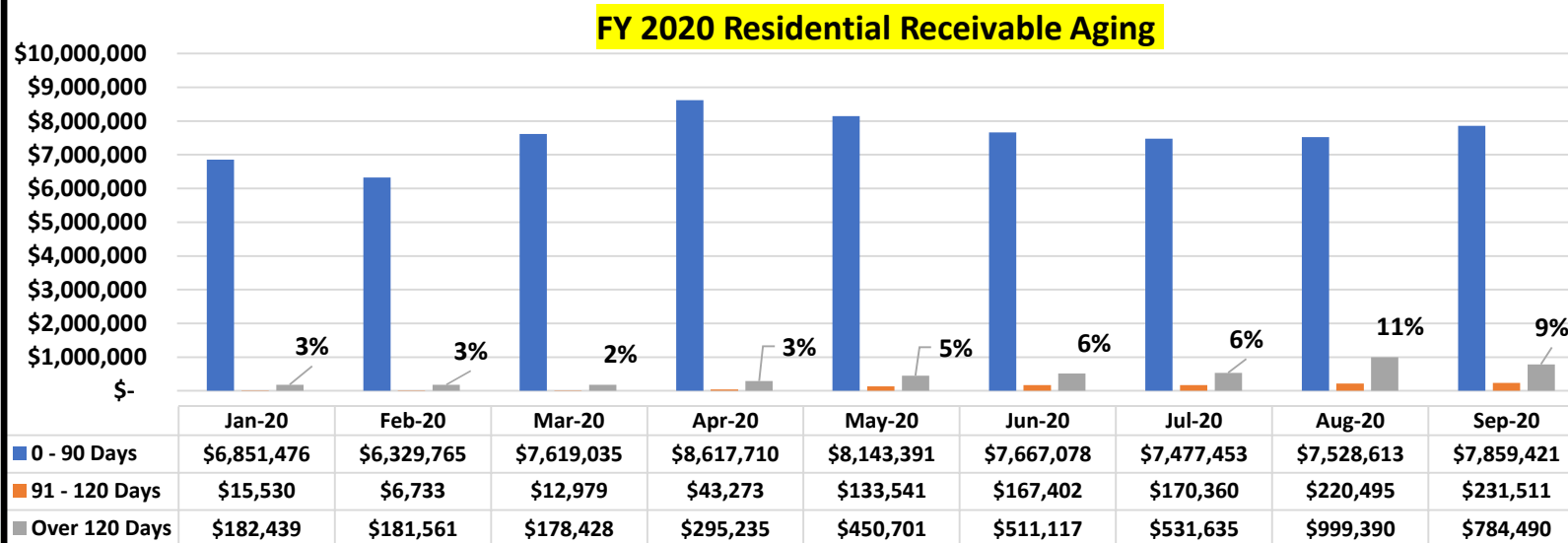
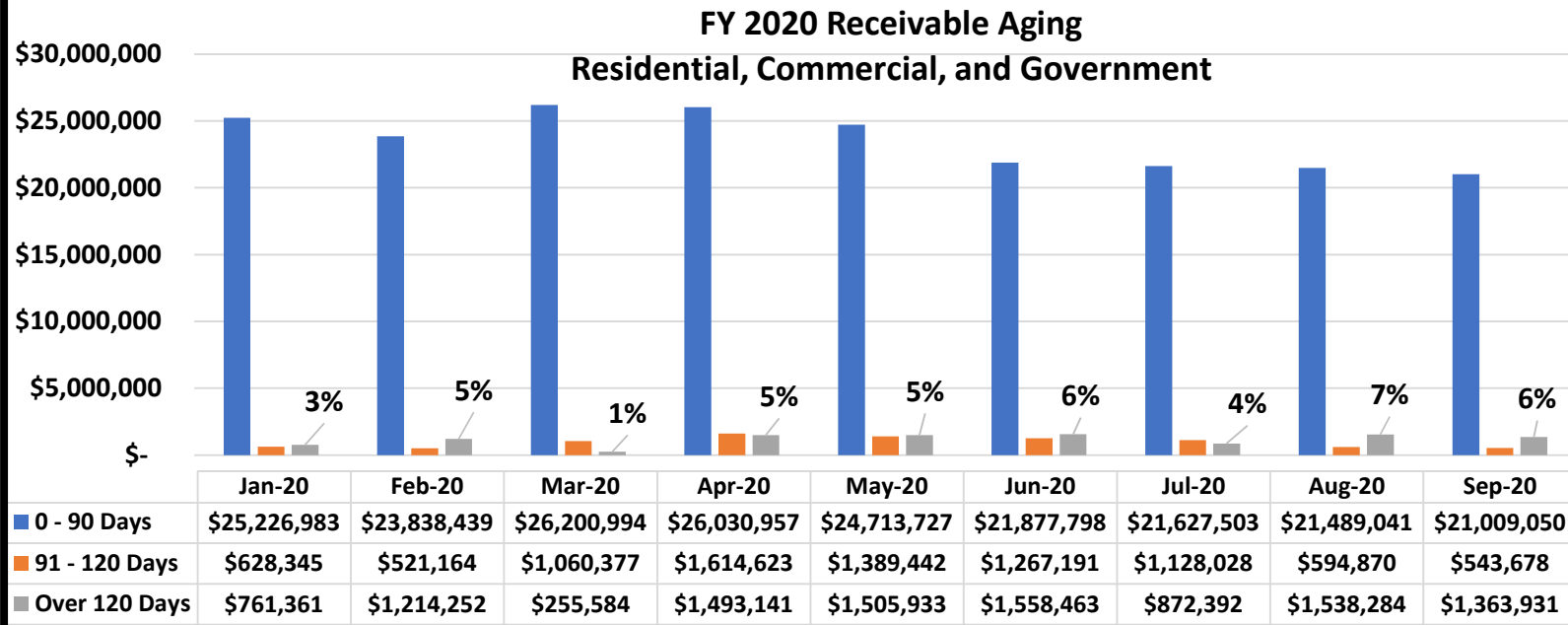


(5,000,000)	Jan	Feb	Mar	Apr	May	Jun	Jul	Aug	Sep
FY 2019	24,517,651	22,368,909	26,077,843	27,083,234	28,255,054	27,082,742	27,997,548	27,239,150	25,184,246
FY 2020	25,963,769	23,581,439	24,905,070	25,867,160	27,028,828	27,911,363	27,387,340	26,232,462	24,056,495
Variance	1,446,118	1,212,531	(1,172,773)	(1,216,074)	(1,226,226)	828,621	(610,208)	(1,006,688)	(1,127,751)



COVID-19 IMPACT - Receivables Aging

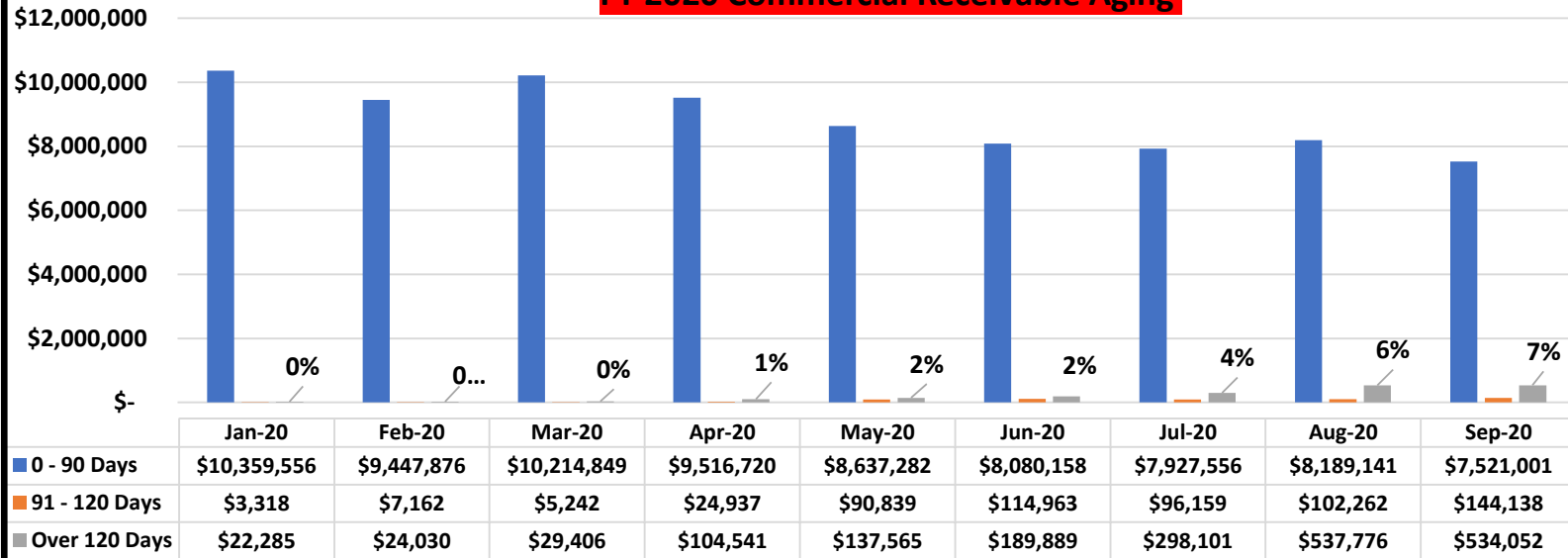
19



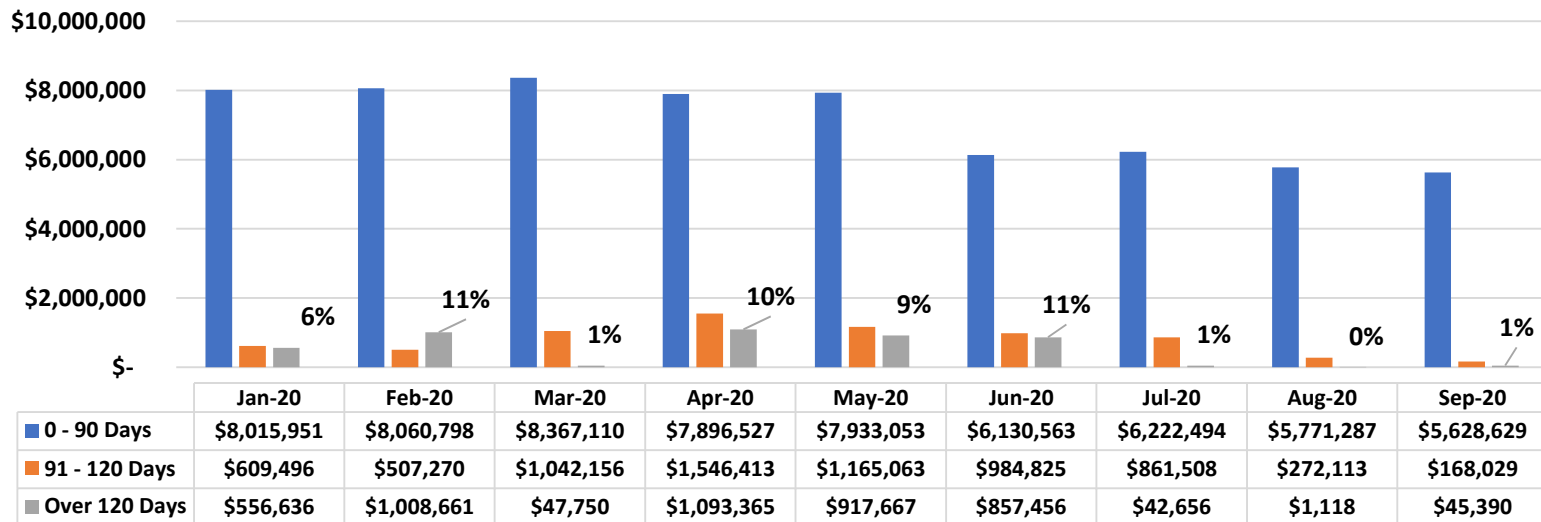
COVID-19 IMPACT - Receivables Aging

20

FY 2020 Commercial Receivable Aging

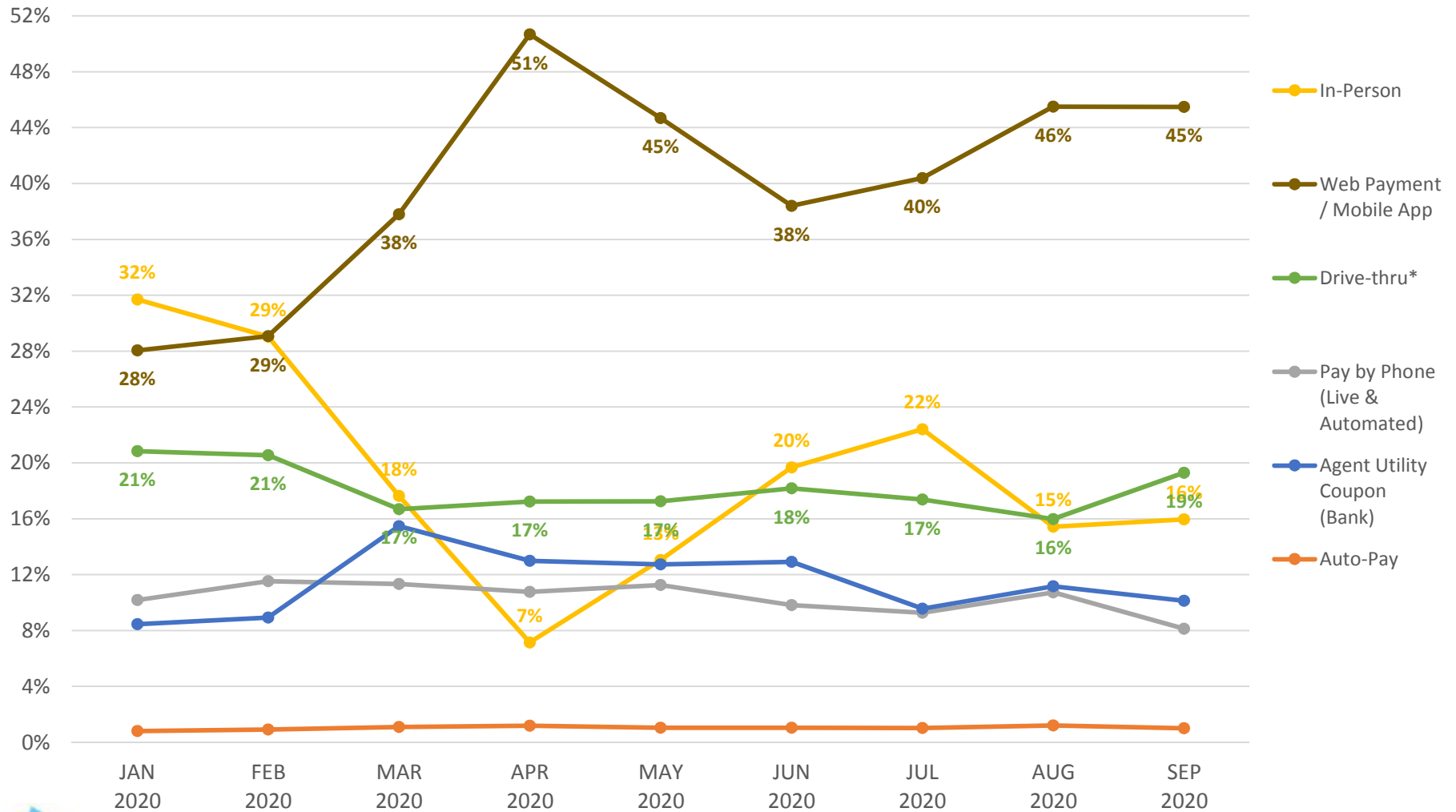


FY 2020 Government Receivable Aging



PAYMENT COLLECTIONS BY PLATFORM

21



SAFETY

CRITICAL SERVICES	STATUS	TREND
MAINTAIN AND PROTECT WORKFORCE		▲
Provide necessary safety equipment and Personal Protective Equipment (PPE).		▲
Higher visibility of safety personnel at Fadian and Cabras locations.		▲
Continuous sanitization of high touch areas throughout Fadian and Cabras work areas.		▲
Control and limit access into GPA buildings. <i>Fadian and Cabras.</i>		▲
Timely dissemination of COVID-19 related information. <i>JIC releases, DPHSS guidance, Governor's Executive Orders, CDC guidance, etc.</i>		▲
Initiate decontamination services for GPA assets with known or probable contact with COVID-19. <i>Work areas, vehicles, tools, etc.</i>		▲
Security checkpoint with temperature check for employees and authorized personnel prior to entry into GPA work areas.		▲
Security checkpoint with temperature check for customers prior to entry into GPA customer lobbies.		▲
CRITICAL PROJECTS		▲
Procurement of safety equipment, PPE's, and decontamination services.		▲
COVID-19 mitigation. <i>Signage, pre-measured social distancing floor decals, constant restocking of hand sanitizer and soap dispensers, etc.</i>		▲
Setup and hazard assessment for Drive-Thru Operations. <i>Parking lot traffic control, theft and robbery detection/prevention.</i>		▲
Daily employee availability tracking and internal contact tracing of known COVID-19 instances.		▲
EFFECTIVE USE TECHNOLOGY		▲
Upgraded temperature check checkpoint with face covering detection at entrances into GPA buildings.		▲

Customer Service Division

Aug 2020

SITE	Less than 10 Mins.	%	10-15 Mins.	%	15-30 Mins.	%	30-45 Mins.	%	TOTAL	Location %
FADIAN	460	76%	120	20%	15	2%	12	2%	607	31%
HAGATNA	498	72%	149	22%	28	4%	16	2%	691	36%
UPPER TUMON	457	72%	145	23%	21	3%	12	2%	635	33%
TOTAL:	1,415	73%	414	21%	64	3%	40	3%	1,933	100%

Government Accounts Receivable: CSD reports invoices for the month of Aug 2020, for 75 active government accounts with an overall total of \$3,607,469.62, and 62 accounts were current (83%), 13 accounts with arrears (17%). 9 fax/emails issued to government accounts totaling \$2,383,142.69. July 2020 invoices, 30 accounts paid in full.

Credit and Collection

Delinquent Ratio: As of July 2020, the authority reported a total 48,433 active customers. The "Delinquent Ratio" was recorded at 10.77% with 5,217 total delinquent accounts, total arrears of 3,877,322.11; 1,856,591.76; 4,953(10.23% / 28-45 days) category; 917,719.96; 2,338(4.83% / 46-60 days); 338,218.14; 1,112(2.30% 61-90 days); and 764,792.25; 1,463(3.02% / Over 90 days).

Bankruptcy: The Authority reports no bankruptcy for the month of Aug 2020.

Damage Claim: The Authority reports no damage claim for the month of Aug 2020.

ACTIVE DELINQUENT – NON-PAYMENT

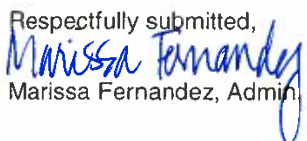
Command Center / Disconnection / Reconnections

Single Phase Meters: Credit and Collection issued orders to Command Center to perform remote disconnect/reconnect for a total of 2 customers; 2(100%) were disconnected; 0(0%) deferred; 0(0%) incompletes.

3 Phase Meters: Credit and Collection issued orders to Disconnect Reconnect crew to perform truck roll out disconnect/reconnect for a total of 0 customers; 0(0%) were disconnected; 0(0%) deferred; 0(0%) incompletes.

FY 2020 (Aug 01- Aug 31, 2020)								
	Scheduled	Disc	Deferred	Complete Vs. Scheduled	Incomplete Disconnections	Disc Vs. Scheduled	Deferred Vs. Scheduled	Incomplete Vs. Scheduled
Aug-20	2	2	----	2 100%	----	100%	----	----
Jul-20	3	3	----	3 100%	----	100%	----	----
3rd	----	----	----	----	----	----	----	----
2nd	3,351	1,746	1,583	3,329 99%	22	52%	47%	1%
1st	1,969	1,358	582	1,940 99%	29	69%	30%	1%
TOTAL:	5,325	3,109	2,165	5,274 99%	51	58%	41%	1%
FY 2019 (October 01, 2018 – September 30, 2019)								
QTR	Scheduled	Disc	Deferred	Complete Vs. Scheduled	Incomplete Disconnections	Disc Vs. Scheduled	Deferred Vs. Scheduled	Incomplete Vs. Scheduled
4 th	3,456	2,400	1,038	3,438 99%	18	69%	30%	1%
3 rd	2,160	1,487	626	2,113 98%	44	69%	29%	2%
2 nd	2,869	2,089	711	2,800 98%	69	73%	25%	2%
1 st	8,855	2,720	6,013	8,733 99%	122	31%	68%	1%
TOTAL:	17,340	8,696	8,388	17,084 99%	253	50%	48%	2%

This concludes the Summary Report for the Customer Service Division for the month of August 2020.

Respectfully submitted,

 Marissa Fernandez, Admin. Officer

Reviewed / Approved by:

 Richard J. Bersamin, ACSM

Run Date: 9/8/2020
Run Time: 12:01:47AM

Guam Power Authority
Delinquent Active Accounts Summary Report
As of - 09/08/2020

Report ID: DELRATIO
Page 138 of 138

<u>Rate Classification</u>	<u>Total Cust</u>	<u>Del Cust</u>	<u>Del 28-45</u>	<u>Del 46-60</u>	<u>Del 61-90</u>	<u>Over-90</u>	<u>Current Balance</u>	<u>28-45 Days</u>	<u>46-60 Days</u>	<u>61-90 Days</u>	<u>>90 Days</u>	<u>Total Arrears</u>	<u>Total C</u>
Residential(ERES-R)	42,714	4,653	4,447	2,093	968	1,277	5,915,887.84	923,052.05	430,163.36	232,808.20	428,226.07	2,014,249.68	7,930,137
		10.89%	10.41%	4.90%	2.27%	2.99%							
Small Gen Non Demand(EGEN-G)	4,247	456	410	194	116	149	925,277.26	132,572.16	48,640.37	31,909.16	80,036.49	293,158.18	1,218,435
		10.74%	9.65%	4.57%	2.73%	3.51%							
Small Gen Demand(EGEND-J)	837	54	52	30	15	18	2,142,269.87	183,068.52	78,893.64	52,438.44	140,760.63	455,161.23	2,597,431
		6.45%	6.21%	3.58%	1.79%	2.15%							
Large General(ELPS-P)	120	16	16	8	1	3	4,528,503.85	616,351.92	359,569.86	20,629.72	109,763.97	1,106,315.47	5,634,819
		13.33%	13.33%	6.67%	0.83%	2.50%							
Private Streetlight(EPOL-H)	515	38	28	13	12	16	20,558.65	1,547.11	452.73	432.62	6,005.09	8,437.55	28,996
		7.38%	5.44%	2.52%	2.33%	3.11%							
<u>Sub-Total (Private)</u>	48,433	5,217	4,953	2,338	1,112	1,463	13,532,497.47	1,856,591.76	917,719.96	338,218.14	764,792.25	3,877,322.11	17,409,919
		10.77%	10.23%	4.83%	2.30%	3.02%							
Small Gov Non Demand(ESGS-S)	660	184	183	84	10	11	432,317.71	114,401.67	41,237.77	2,826.48	12,917.86	171,383.78	603,701
		27.88%	27.73%	12.73%	1.52%	1.67%							
Small Gov Demand(ESGSD-K)	358	137	137	90	1	16	2,593,440.42	486,276.07	363,811.14	1,976.27	55,515.03	907,578.51	3,501,018
		38.27%	38.27%	25.14%	0.28%	4.47%							
Large Government(ELGS-L)	42	23	23	20	0	6	2,059,735.73	404,559.92	379,420.50	0.00	161,929.22	945,909.64	3,005,645
		54.76%	54.76%	47.62%	0.00%	14.29%							
Gov Streetlight(ESTL-F)	621	442	441	122	10	5	950,344.41	387,312.61	126,798.78	34,375.06	1,886.55	550,373.00	1,500,717
		71%	71.01%	19.65%	1.61%	0.81%							
<u>Sub-Total (Government)</u>	1,681	786	784	316	21	38	6,035,838.27	1,392,550.27	911,268.19	39,177.81	232,248.66	2,575,244.93	8,611,083
		46.76%	46.64%	18.80%	1.25%	2.26%							
<u>GRAND TOTAL</u>	50,114	6,003	5,737	2,654	1,133	1,501	19,568,335.74	3,249,142.03	1,828,988.15	377,395.95	997,040.91	6,452,567.04	26,020,902
		11.98%	11.45%	5.30%	2.26%	3.00%							

Guam Power Authority
Customer Service Division
Employee Month-To-Date (MTD) Consolidated Report
August 2020

Date: 09/08/2020

Compiled by: RitaTC

Reviewed by: EDMendiola

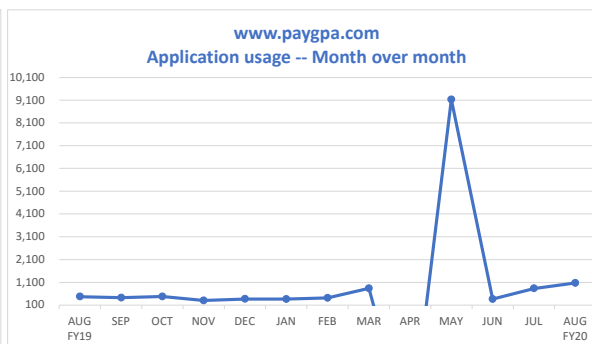
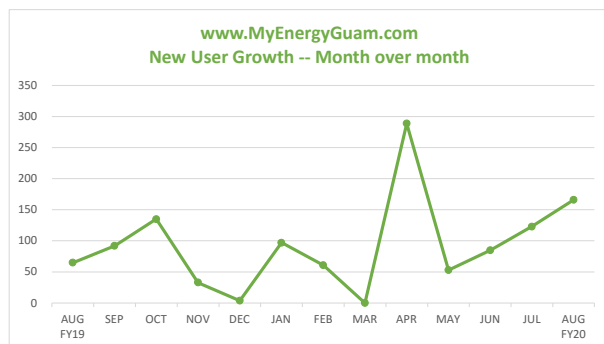
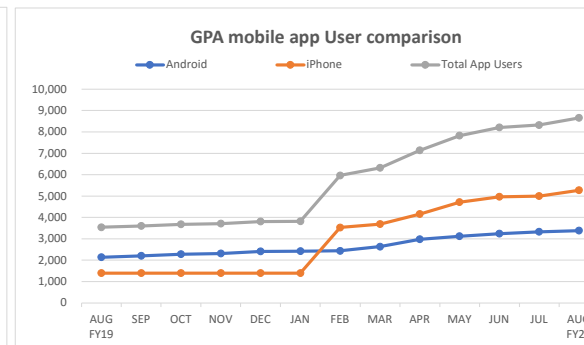
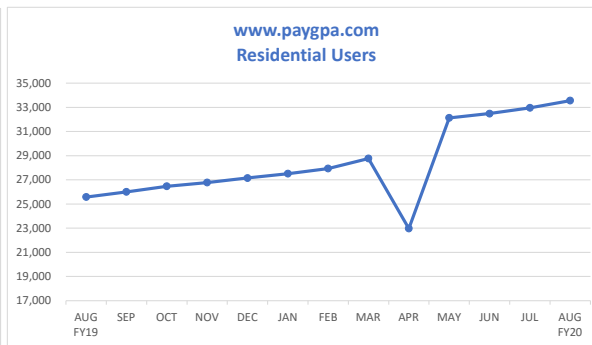
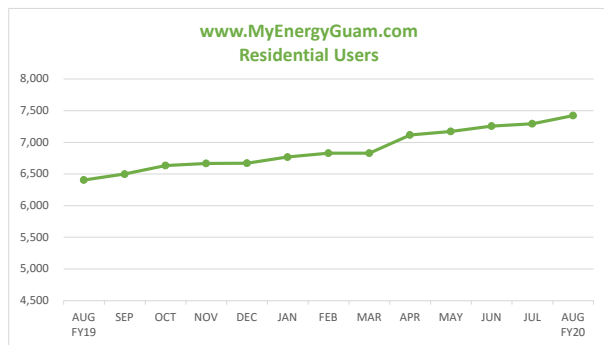
Reason(s) for visit	Transaction type	Fadian	% MTD	Julale	% MTD	Tumon	% MTD	TOTAL
New Install - Permanent (NI1)	Application	3	0.5%	0	0.0%	1	0.2%	4
New Install - Temporary (NI2)	Application	7	1.2%	0	0.0%	0	0.0%	7
New Install - Street Light (NI3)	Application	1	0.2%	1	0.1%	0	0.0%	2
Reconnection - Install Meter (NI4)	Application	3	0.5%	3	0.4%	3	0.5%	9
Reconnection - Turn on Meter (NI5)	Application	22	3.6%	32	4.6%	69	10.9%	123
Name Change (NC1)	Application	106	17.5%	84	12.2%	114	18.0%	304
Name Change - Street Light (NC2)	Application	0	0.0%	0	0.0%	0	0.0%	0
Termination - Regular (TE1)	Termination	39	6.4%	47	6.8%	72	11.3%	158
Termination - Name Change (TE2)	Termination	0	0.0%	0	0.0%	0	0.0%	0
Termination - Non Payment (TE3)	Termination	0	0.0%	0	0.0%	0	0.0%	0
Termination - Typhoon (TE4)	Termination	0	0.0%	0	0.0%	0	0.0%	0
Termination - Removal (TE5)	Termination	1	0.2%	0	0.0%	1	0.2%	2
Termination - Street (TE6)	Termination	0	0.0%	0	0.0%	0	0.0%	0
GPR Pole Relocation	Other	2	0.3%	0	0.0%	0	0.0%	2
Work Clearance - Emergency (WCE)	Other	0	0.0%	1	0.1%	1	0.2%	2
Work Clearance - Underground (UG)	Other	4	0.7%	2	0.3%	0	0.0%	6
Work Clearance - Overhead (OH)	Other	3	0.5%	4	0.6%	2	0.3%	9
Meter Investigation (INV)	Other	1	0.2%	0	0.0%	0	0.0%	1
Meter Change Out / Calibration (MC1)	Other	0	0.0%	0	0.0%	0	0.0%	0
Meter Upgrade / Downgrade (MC3)	Other	0	0.0%	0	0.0%	0	0.0%	0
Misc Public Service (MPS)	Other	6	1.0%	4	0.6%	1	0.2%	11
Refund (RFD)	Other	3	0.5%	4	0.6%	5	0.8%	12
Relocation of Meter (RM1)	Other	4	0.7%	0	0.0%	2	0.3%	6
Street Light Repair (ST1)	Other	0	0.0%	0	0.0%	0	0.0%	0
Inspection Report (IR)	Other	7	1.2%	4	0.6%	2	0.3%	13
Copy of Bill (COB)	Other	54	8.9%	116	16.8%	54	8.5%	224
Bill Inquiry (BILL INQ)	Other	0	0.0%	0	0.0%	0	0.0%	0
Bill Adjustment (BILL ADJ)	Other	9	1.5%	3	0.4%	0	0.0%	12
Address Change (ADDR CHG)	Other	15	2.5%	26	3.8%	13	2.0%	54
Deferred Payment Agreement (DPA)	Other	0	0.0%	0	0.0%	0	0.0%	0
Prepaid INQ Account Inquiry	Other	3	0.5%	8	1.2%	4	0.6%	15
Prepaid Application	Other	5	0.8%	8	1.2%	6	0.9%	19
Rebate	Other	144	23.7%	132	19.1%	75	11.8%	351
ACH/EFT Direct Payment Authorization	Other	1	0.2%	3	0.4%	2	0.3%	6
No Answer	Other	0	0.0%	0	0.0%	0	0.0%	0
Inquiry (INQ)	Active Delinquent	134	22.1%	141	20.4%	184	29.0%	459
Payment in Full (PYMT)	Active Delinquent	0	0.0%	18	2.6%	0	0.0%	18
Do Not Disconnect (DND)	Active Delinquent	0	0.0%	0	0.0%	0	0.0%	0
Extension Pay Plan (EXT)	Active Delinquent	21	3.5%	31	4.5%	12	1.9%	64
Reconnect (REC)	Active Delinquent	0	0.0%	0	0.0%	0	0.0%	0
Inquiry (INQ)	Inactive	9	1.5%	18	2.6%	8	1.3%	35
Payment in Full (PYMT)	Inactive	0	0.0%	0	0.0%	0	0.0%	0
Transfer Balance (TRF BAL)	Inactive	0	0.0%	1	0.1%	4	0.6%	5
Total transactions by location		607		691		635		
Grand total for all locations								1,933

Duration of wait time for "Visit (V)" type customer contact	Fadian	%	Hagatna	%	Tumon	%
Less than 10 minutes	460	76%	498	72%	457	72%
11-15 minutes	120	20%	149	22%	145	23%
16-30 minutes	15	2%	28	4%	21	3%
More than 30 minutes	12	2%	16	2%	12	2%
Total "Visit (V)" customers contacts	607		691		635	

Note: August 17-28, 2020 Closed for In-Person services due to PCOR 1 EO 2020-27.

Guam Power Authority

Customer Service Division
Online resources usage and growth - Residential Users
as of August 31, 2020

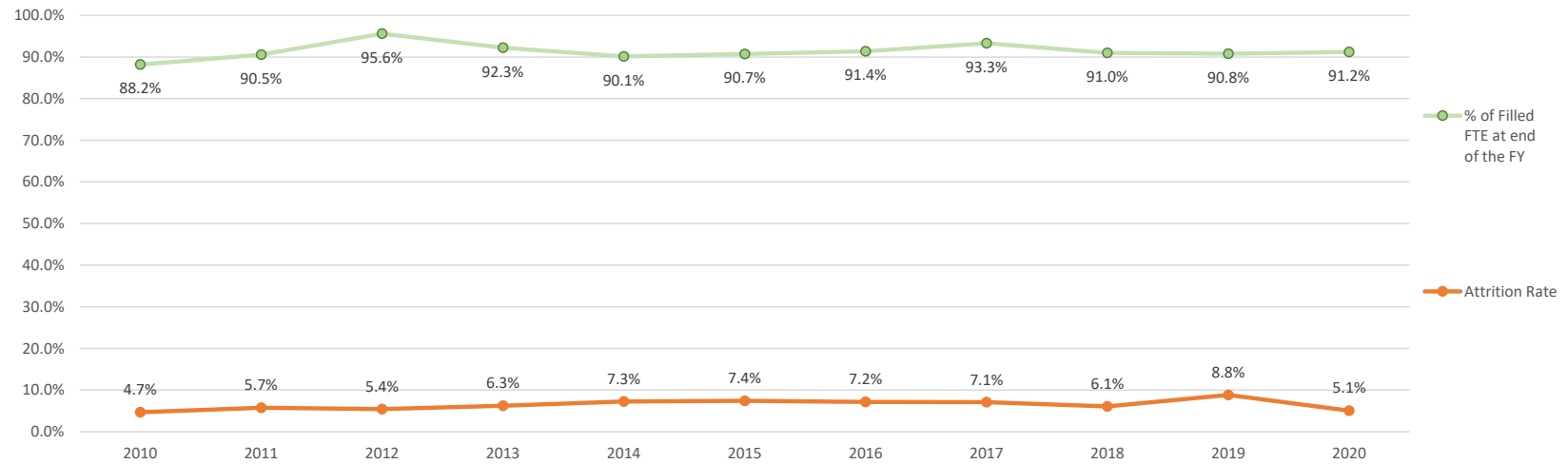


Guam Power Authority

Human Resources Division

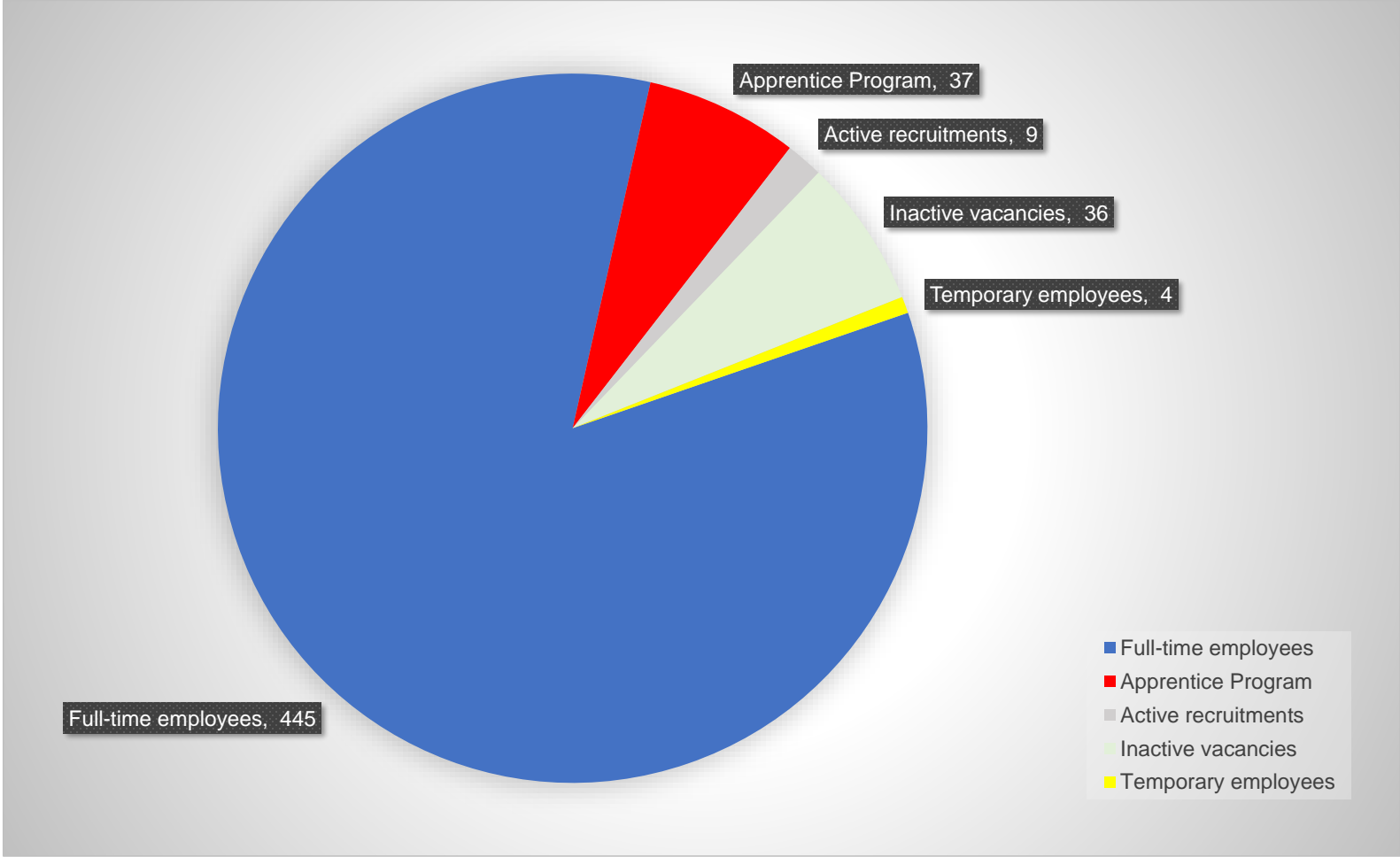
FY 2020 Recruitment Analysis

as of August 31, 2020



Fiscal Year	New Hire	Promotion	Reclassification	Termination	Death	Resignation	Retirement	Attrition Rate	Total Authorized FTE	Total Filled FTE at end of the FY	% of Filled FTE at end of the FY
2010	13	20	10	0	1	12	12	4.7%	592	522	88.2%
2011	44	23	6	4	0	14	12	5.7%	592	536	90.5%
2012	36	24	6	1	2	19	7	5.4%	568	543	95.6%
2013	15	26	9	1	3	14	16	6.3%	568	524	92.3%
2014	26	27	8	1	0	13	24	7.3%	568	512	90.1%
2015	15	25	12	2	1	19	16	7.4%	539	489	90.7%
2016	12	20	17	3	1	15	16	7.2%	510	466	91.4%
2017	42	15	21	0	1	13	19	7.1%	510	476	93.3%
2018	17	16	13	0	3	15	11	6.1%	510	464	91.0%
2019	31	20	3	3	3	18	17	8.8%	500	454	90.8%
2020	15	11	6	1	1	8	13	5.1%	490	447	91.2%

Guam Power Authority
Human Resources Division
FY 2020 Staffing Report
as of August 31, 2020



Guam Power Authority

Human Resources Division

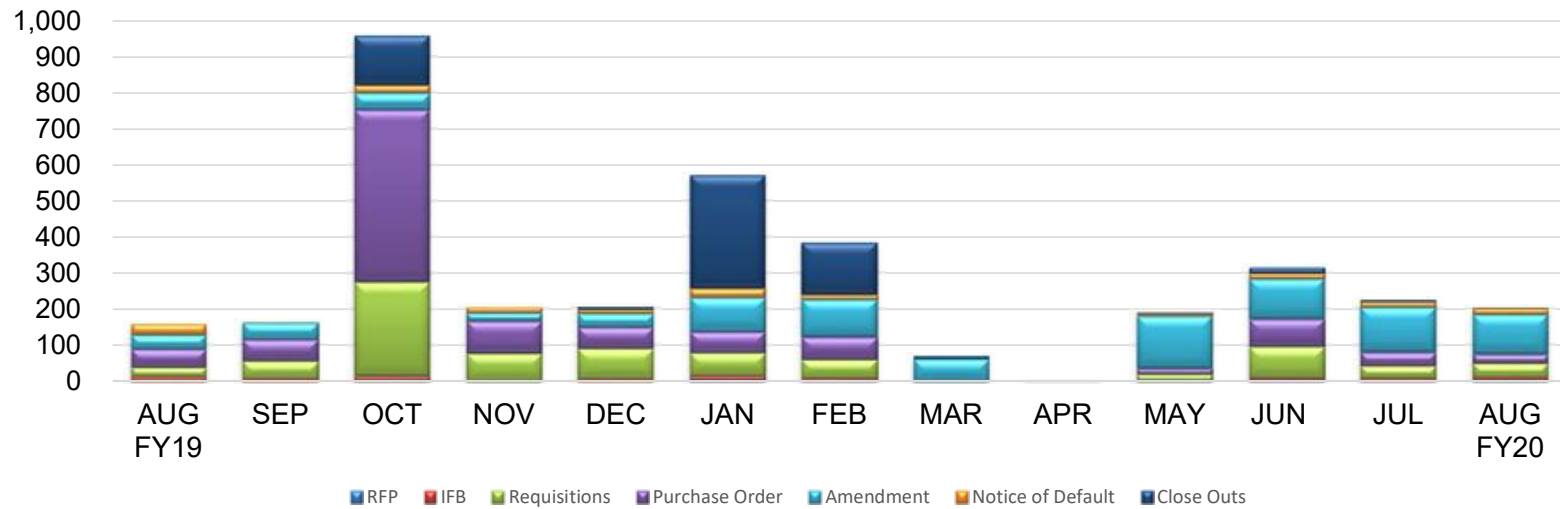
FY 2020 Staffing Report

as of August 31, 2020

Department / Division / Program	Prior Month Employee Count	Current Month Employee Count	No. of Vacancies Prior Month	No. of Vacancies Current Month	Total Staffing
Assistant GM - Administration	2	2	-	-	2
Assistant GM - Engineering & Technical Services	1	1	-	-	1
Assistant GM - Operations	2	2	-	-	2
Consolidated Commission on Utilities Board	2	2	-	-	2
Customer Service	31	31	3	3	34
Engineering	37	37	2	2	39
Facilities	8	8	1	1	9
Finance	41	41	3	3	44
General Manager (GM)	4	4	-	-	4
Generation	106	105	16	16	121
Human Resources	9	9	1	1	10
Information Technology	16	16	-	-	16
Internal Audit / Revenue Protection	3	3	-	-	3
Planning and Regulatory	8	8	-	-	8
Power System Control Center	27	27	3	3	30
Procurement	22	22	-	-	22
Public Information Office	2	2	-	-	2
Safety	7	7	-	-	7
Strategic Planning and Operations Research Division	10	10	1	1	11
Transmission and Distribution	98	97	13	15	112
Transportation	11	11	-	-	11
Total full-time permanent employees	447	445	43	45	490
Apprenticeship Program	37	37	-	-	37
JOBS Program / GETP / SCSEP*	-	-	-	-	-
Summer Engineering Internship Program	-	-	-	-	-
Temporary hires (Public Law 34-116)	3	3	-	-	3
Work Experience Program	1	1	-	-	1
Total contractual / temporary employees	41	41	-	-	41
Work Force Grand Total	488	486	43	45	531

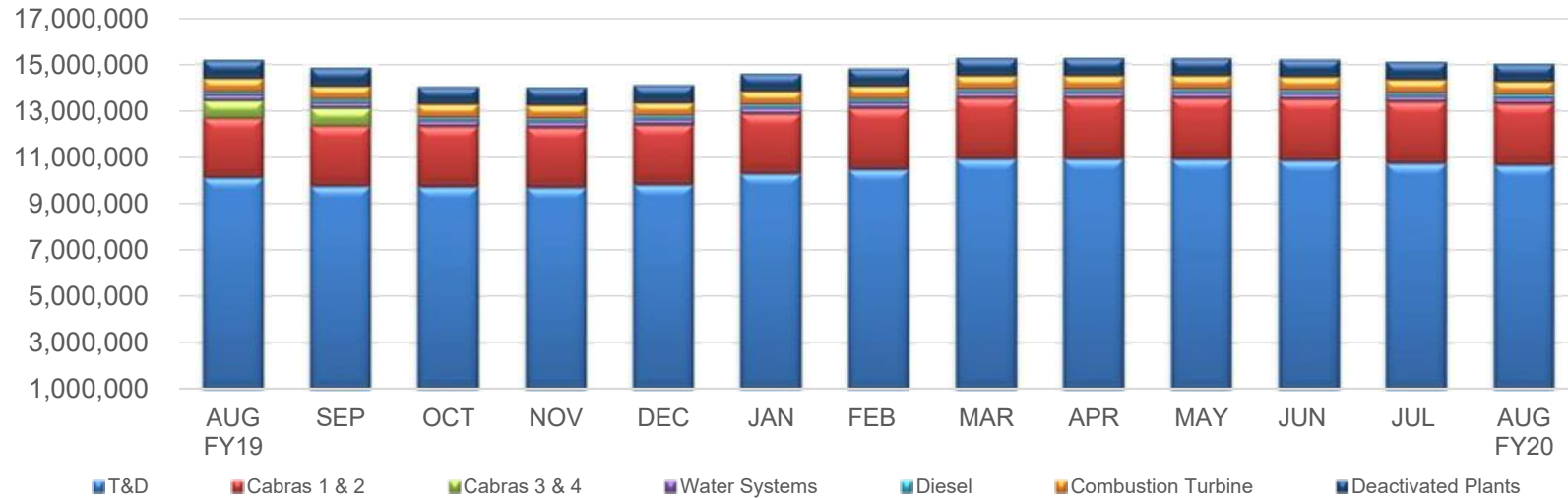
*Job Opportunities & Basic Skills (JOBS) Program, Guam Employment & Training Program (GETP), Senior Community Service Employment Program (SCSEP)

**Guam Power Authority
Procurement Division
FY 2020 GPA Buyer's Monthly Report
as of August 31, 2020**



Month	RFP	IFB	Requisitions	Purchase Order	Amendment	Notice of Default	Close Outs
AUG FY19	0	12	26	51	39	30	0
SEP	0	6	49	59	46	2	0
OCT	1	12	261	478	46	21	138
NOV	0	0	77	89	22	15	1
DEC	0	6	83	59	37	11	7
JAN	3	12	63	59	94	25	314
FEB	1	7	52	62	103	13	144
MAR	0	0	0	0	61	0	9
APR	0	0	0	0	0	0	0
MAY	0	0	19	16	143	6	5
JUN	2	7	86	76	111	15	17
JUL	1	7	34	38	123	16	5
AUG FY20	3	7	39	25	109	16	2

Guam Power Authority Procurement Division FY 2020 GPA Inventory Actuals as of August 31, 2020

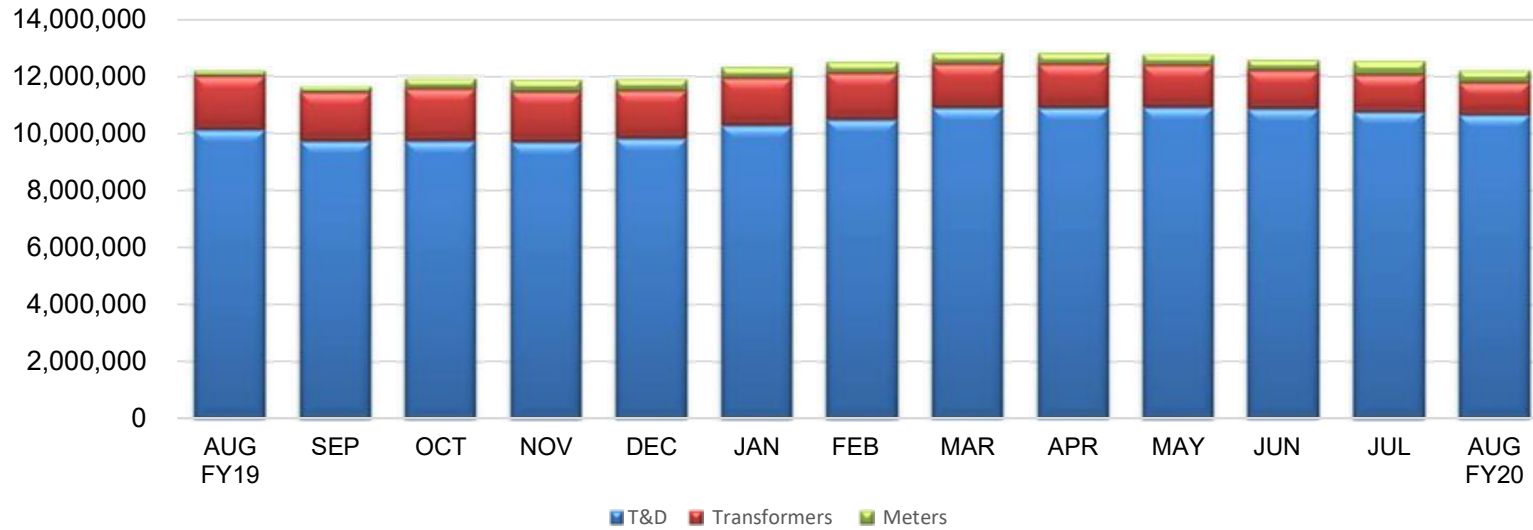


Month	T&D	Cabras 1 & 2	Cabras 3 & 4	Water Systems	Diesel	Combustion Turbine	Deactivated Plants
AUG FY19	10,110,637	2,574,558	747,587	239,171	144,680	573,330	788,101
SEP	9,726,986	2,599,288	757,587	240,153	144,680	573,330	788,096
OCT	9,725,666	2,600,172	0	241,993	131,155	573,454	768,924
NOV	9,676,653	2,583,555	0	241,595	144,680	573,454	768,924
DEC	9,816,091	2,589,773	0	239,124	144,680	573,454	768,924
JAN	10,287,509	2,590,587	0	239,324	144,680	573,454	768,924
FEB	10,474,802	2,648,042	0	234,786	144,680	571,918	767,388
MAR	10,901,323	2,630,656	0	234,869	144,680	571,918	767,388
APR	10,900,511	2,630,656	0	234,869	144,680	571,918	767,388
MAY	10,915,252	2,642,550	0	236,912	144,680	571,918	767,388
JUN	10,842,710	2,653,604	0	231,635	144,680	571,918	767,388
JUL	10,743,076	2,657,323	0	238,195	144,680	571,918	767,388
AUG FY20	10,657,510	2,651,752	0	238,226	144,680	571,918	767,388

Guam Power Authority

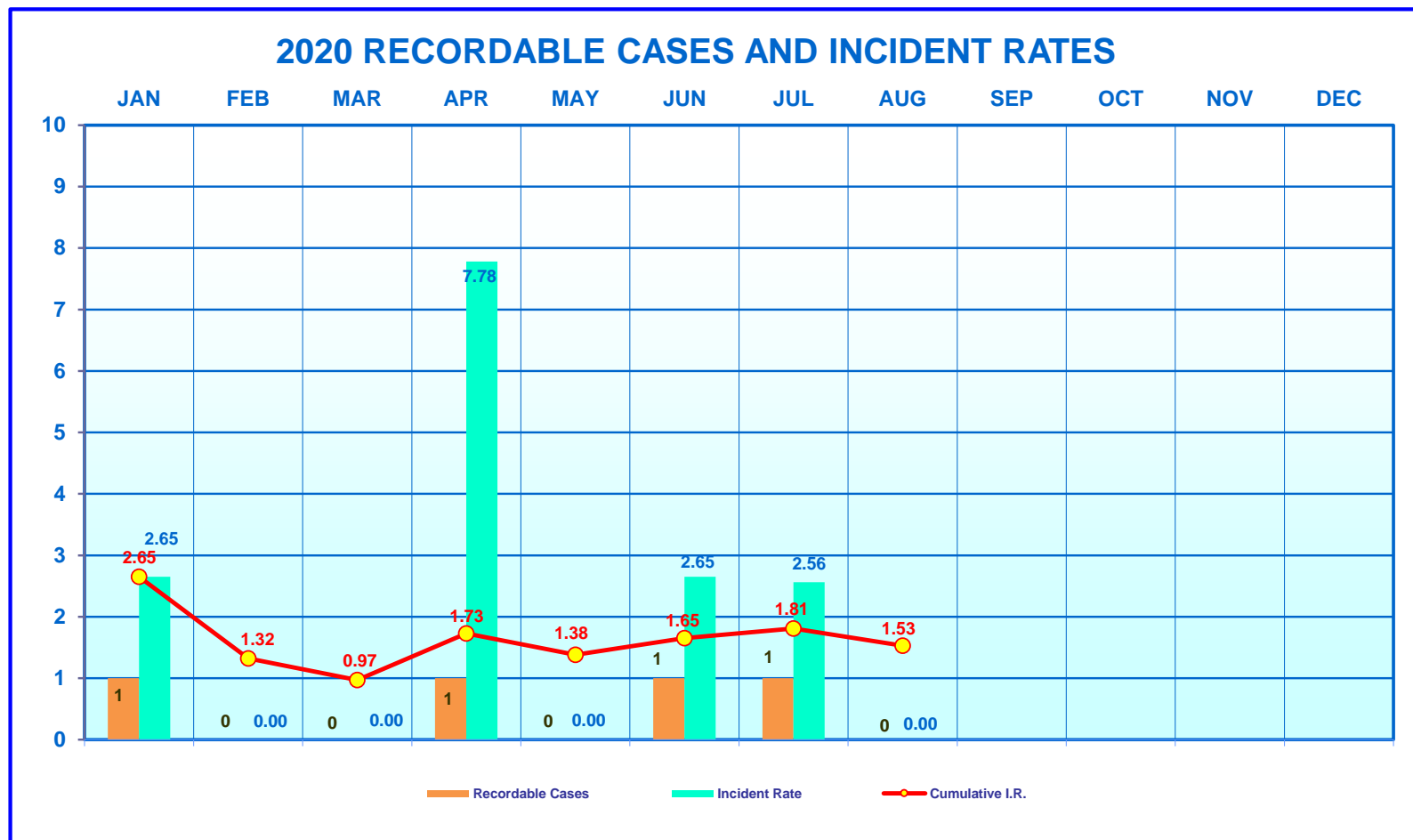
Procurement Division

FY 2020 T&D Inventory Actuals as of August 31, 2020

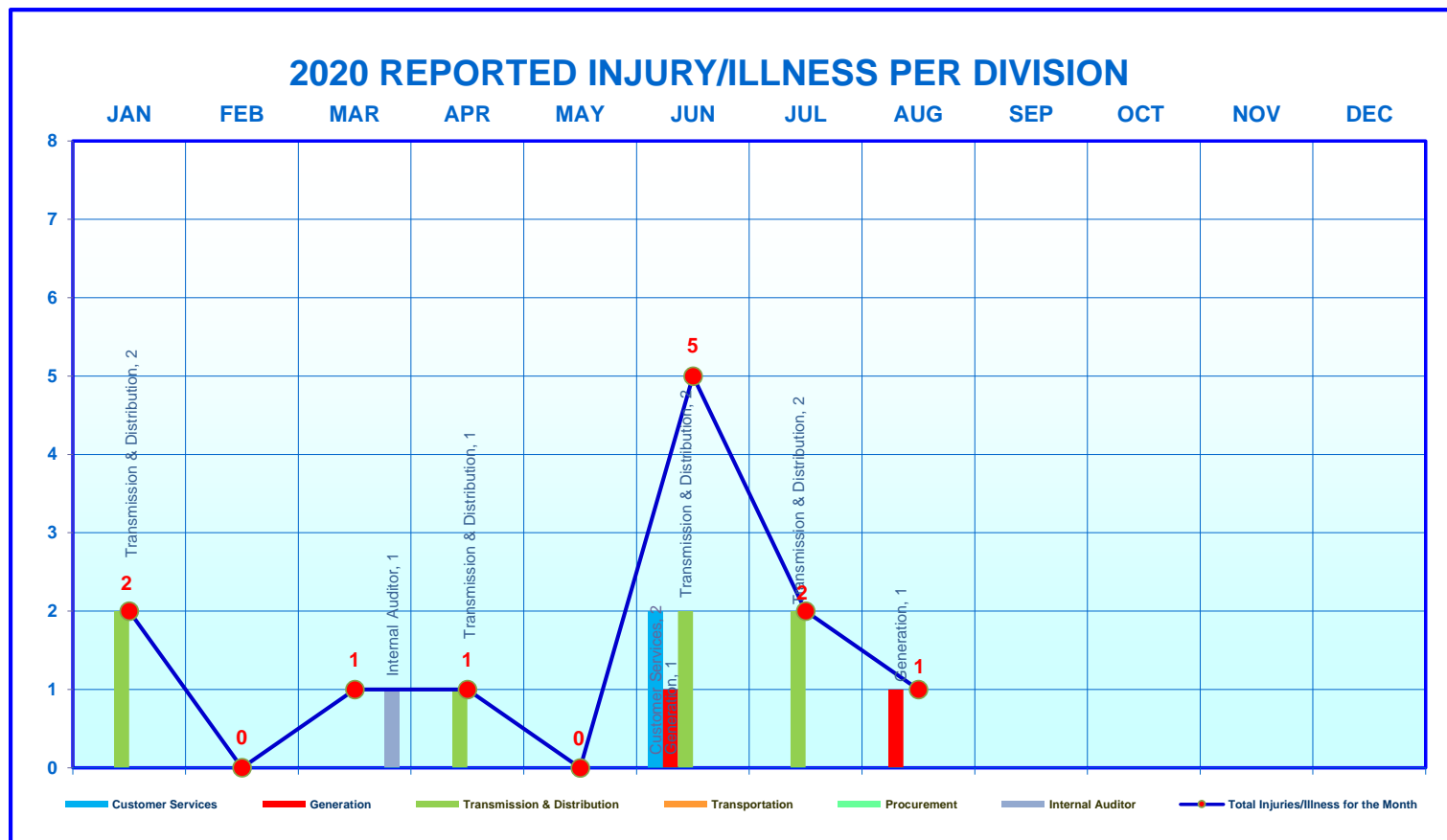


Month	T&D	Transformers	Meters
AUG FY19	10,110,637	1,881,402	190,612
SEP	9,726,986	1,715,305	214,728
OCT	9,725,666	1,835,760	358,344
NOV	9,673,653	1,773,932	409,344
DEC	9,816,091	1,687,896	401,032
JAN	10,287,509	1,661,509	384,712
FEB	10,474,802	1,638,253	384,712
MAR	10,901,323	1,536,917	384,712
APR	10,900,551	1,533,782	384,712
MAY	10,915,252	1,484,630	384,712
JUN	10,842,710	1,344,312	366,216
JUL	10,743,076	1,298,114	488,606
AUG FY20	10,657,510	1,130,812	425,860

2020 Incident Rate

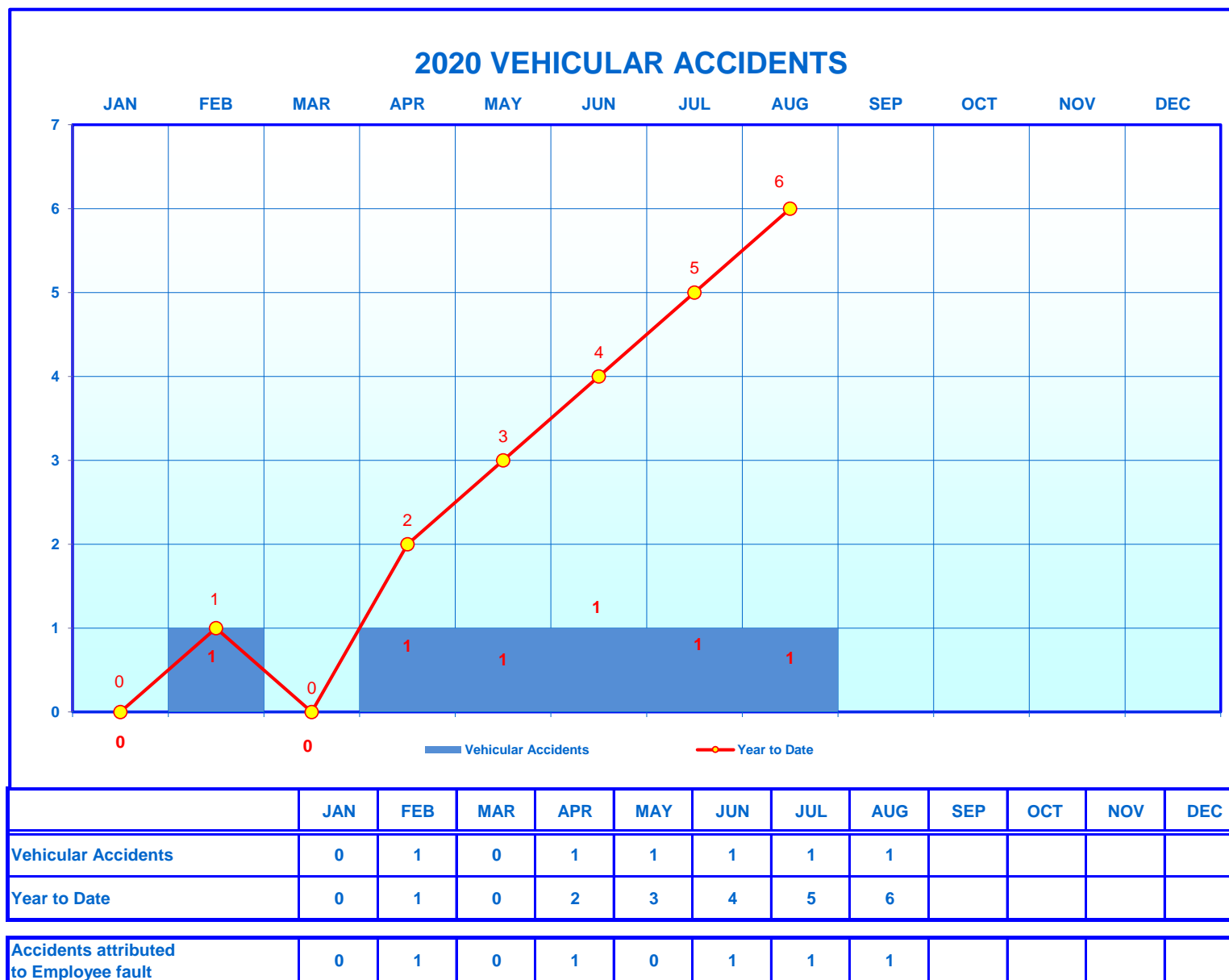


SAFETY DIVISION MONTHLY REPORT



	JAN	FEB	MAR	APR	MAY	JUN	JUL	AUG	SEP	OCT	NOV	DEC
Customer Services						2						
Generation						1		1				
Transmission & Distribution	2			1		2	2					
Procurement												
Transportation												
Internal Auditor			1									
Total Injuries/Illness for the Month	2	0	1	1	0	5	2	1				

SAFETY DIVISION MONTHLY REPORT





GPA Communications/PIO KPI Status

10 October 2020

Ratepayer “Insights” Newsletter



Overall Status	G	Risks & Issues	G	Schedule	G	Scope	G	Financial	G
----------------	---	----------------	---	----------	---	-------	---	-----------	---

Status

1. October “Insights” newsletter content compiled and in circulation;
2. Features articles on “Updating Account Information” to support ongoing promotion of “Power Alerts” SMS Outage Notification feature;
3. Added Guam Cancer Care Pink Ribbon Breast Cancer Awareness graphic

Accomplishments

1. Completed October *Insights* Ratepayer Newsletter
2. November issue in production

Risks and Issues

1. None to report;

Resolution

Financial

Budgeted for FY21

10/13/2020



No corrective action required



Legend:
Near-term corrective action required



Requires immediate attention

2019 Annual Report Project



Overall Status	G	Risks & Issues	G	Schedule	G	Scope	G	Financial	G
----------------	---	----------------	---	----------	---	-------	---	-----------	---

Status

1. Completed AR FY19 write up, GM/Chairman/Administration letters, image selection, layout and design completed.
2. Proofread and approved for print.

Accomplishments

1. Completed FY19 AR – electronic copy posted on website and distributed to 35th Guam Legislature, Gov & Lt Gov Offices, Mayors, CCU, GPUC, PPA and GPA Management Team

Risks and Issues

1. None to Report

Resolution

Financial

None to report	Within Budget

10/13/2020



No corrective action required



Legend:
Near-term corrective action required



Requires immediate attention

3

2019 Citizens-Centric Report



Overall Status	G	Risks & Issues	G	Schedule	G	Scope	G	Financial	G
----------------	---	----------------	---	----------	---	-------	---	-----------	---

Status

1. Working closely with Finance team the FY19 Citizens-Centric Report (CCR) was completed.

Accomplishments

1. Electronic copy of FY19 CCR – posted on website and social media page; and distributed CCR to stakeholder internal & external publics.
2. Printed hardcopies received and on-hand in Finance Department for additional uses.

Risks and Issues

1. None to Report

Resolution

Financial

None to report	Within Budget

10/13/2020



No corrective action required



Legend:
Near-term corrective action required



Requires immediate attention

COVID-19 Outreach Support



Overall Status	G	Risks & Issues	G	Schedule	G	Scope	G	Financial	G
----------------	---	----------------	---	----------	---	-------	---	-----------	---

Status

- Developed and coordinated outreach of graphics for social media boosting campaign tiles (Facebook);
 - Ways to Pay GPA
- COVID-19 PSA graphics for Fadian Complex e.g. traffic management and drive thru payment(s)
- Developed and coordinated POS and Fadian Traffic Signage; Drive-Thru signage
- Forwarded report on COVID-19-related expenditures to Engineering in support of FEMA reimbursement;

Accomplishments

- All COVID-19 messaging posted on website and social media and is updated accordingly
- Coordinated and executed signage support efforts with Facilities Management
- Updated COVID-19 Message Box on monthly energy statements

Risks and Issues

- None to report

Resolution

Financial

Within budget

10/13/2020



No corrective action required



Legend:
Near-term corrective action required



Requires immediate attention

5

Live Streaming of CCU Meetings & Work Sessions



Overall Status	G	Risks & Issues	G	Schedule	G	Scope	G	Financial	G
----------------	---	----------------	---	----------	---	-------	---	-----------	---

Status

1. Monitoring of Video/Audio Quality ongoing.
2. Training of in-house staff being completed;

Accomplishments

Risks and Issues	Resolution	Financial
1. Audio quality needs improvement	1. Retesting of Microphones	None to report

10/13/2020



No corrective action required



Legend:
Near-term corrective action required



Requires immediate attention

Graphic Projects/Social Media



Overall Status	G	Risks & Issues	G	Schedule	G	Scope	G	Financial	G
----------------	---	----------------	---	----------	---	-------	---	-----------	---

Status

1. Completed Veterans Day Graphic – pending VA holiday for posting;
2. Developing graphic animation for net metering;
3. Animated Energy Conservation :30 sec television commercials in production

All graphic project(s) produced for social media are convertible to web page uploading.

Accomplishments

1. :30 sec Energy Conservation television commercials in production. Media buy/placement under consideration
2. Completed graphic project for UFLS – GM reviewing;
3. Completed graphic for LEAC – GM reviewing

Risks and Issues

1. None to report;

Resolution

Financial

Budgeted for FY21

10/13/2020



No corrective action required



Legend:
Near-term corrective action required



Requires immediate attention

Miscellaneous Activities



Overall Status	G	Risks & Issues	G	Schedule	G	Scope	G	Financial	G
----------------	---	----------------	---	----------	---	-------	---	-----------	---

Status

1. "Power Alerts" support activities
 - a. Press notice distribution;
 - b. "Call Ins" with talk radio stations
2. PayGPA website messaging updates – text/copy activities
3. PSA Disconnection Notice and distribution for internal and external publics;
4. Public Power Week 2020
5. FY 2021 Budget Highlights press releases distributed;

Accomplishments

1. Public Power Week 2020 and Customer Service Appreciation Week – celebration or activities suspended due to COVID-19 pandemic. Employee morale boosting promotional items procured and can be distributed directly to employees.

Financial

None to report

Risks and Issues

Resolution

1. None to report at this time;

Legend:



No corrective action required



Near-term corrective action required



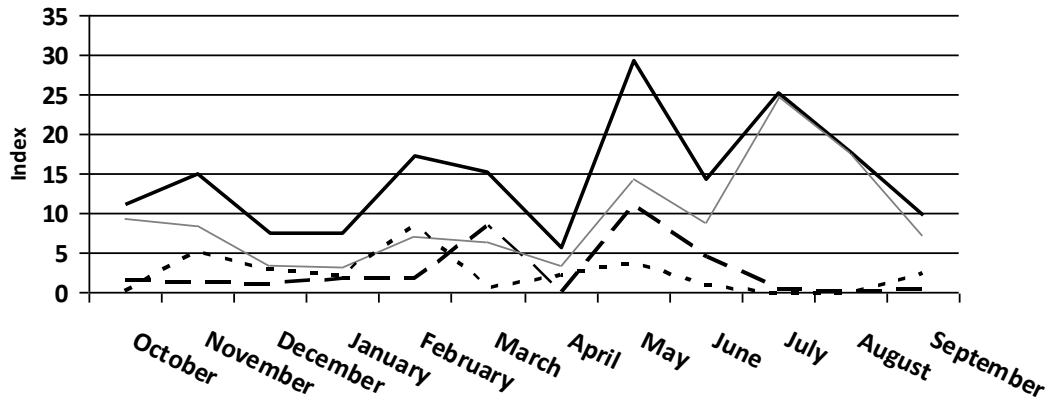
Requires immediate attention

10/13/2020

8



(Item 1.1,1.2,1.5) September 2020 SAIDI = 175.80 ↓ (219.79)



ALL

GEN=29.33

(64.93)

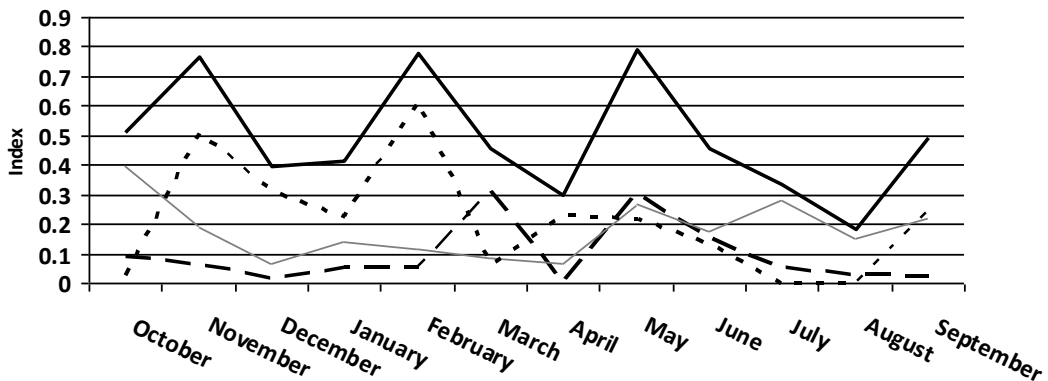
TRANS=32.80

(34.15)

DIST=113.67

(120.71)

(Item 1.1,1.2,1.5) September 2020 SAIFI = 5.88 ↓ (7.00)



ALL

GEN=2.57

(3.67)

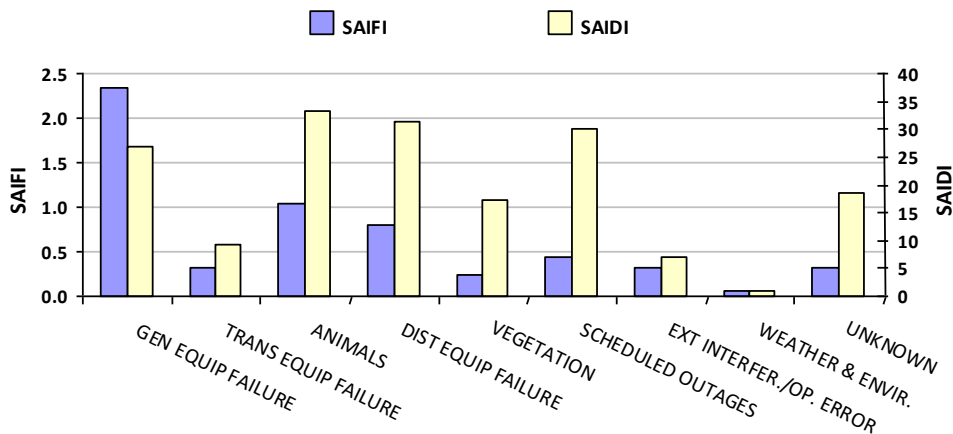
TRANS=1.16

(1.19)

DIST=2.15

(2.14)

(Item 1.9) 12-Month Cause Contributions to Reliability



GEN EQUIP FAILURE

F:37.4% D:15.4%

TRANS EQUIP FAILURE

F:4.6% D:5.3%

ANIMALS

F:15.3% D:19.1%

DIST EQUIP FAILURE

F:11.6% D:17.9%

VEGETATION

F:4.3% D:9.9%

SCHEDULED OUTAGES

F:13.7% D:17.3%

EXT INTERFER./OP. ERROR

F:6.2% D:3.9%

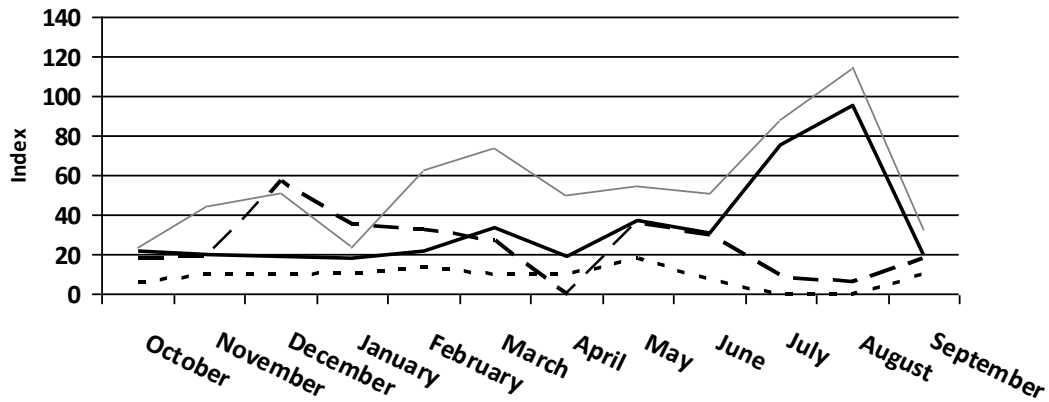
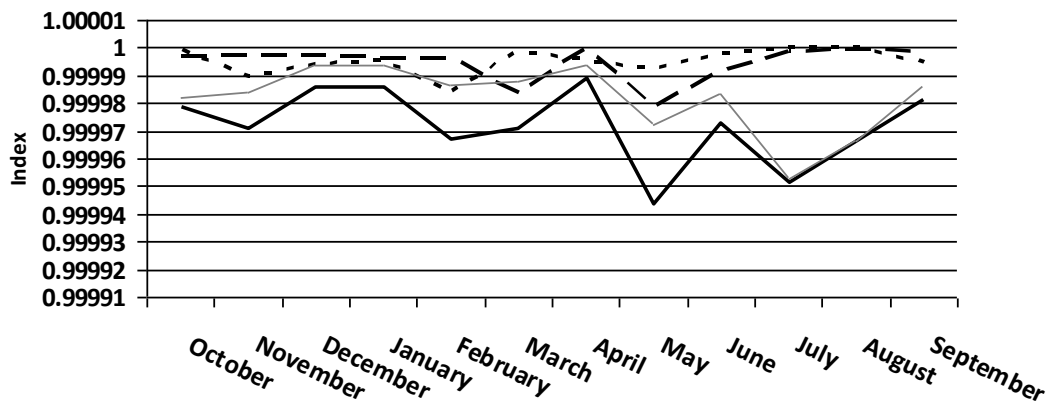
WEATHER & ENVIR.

F:0.7% D:0.6%

UNKNOWN

F:6.2% D:10.6%

As of September 30, 2020

(Item 1.1,1.2,1.5) September 2020 CAIDI = 29.91 ↓ (31.39)**(Item 1.1,1.2,1.5) September 2020 ASAI = 0.9997 ↑ (0.9996)****(Item 1.4) Top 5 Worst Feeders Distribution Causes**

#	Feeder	Outage Count
1	P340	18
2	P271	9
3	P261	8
4	P294	7
5	P283	6

(Item 1.3) Outage Count

TOTAL	UFLS	Non-UFLS
469	208	261

(Item 1.4) Top 5 Distribution Outage Causes

#	Outage Cause	Count
1	Overhead Equipment	49
2	Wind	22
3	Snakes	21
4	Vegetation	18
5	Underground Equipment	3

(Item 1.3) UFLS Contribution to Reliability

SAIDI	SAIFI	CAIDI
40.44	3.09	13.07

NET METERING

September 2020

	<u>Quantity</u>	<u>Connected kVA</u>
Completed	2,126	24,444
Pending	1	7
Grand Total	2,127	24,451

Rate Class and Technology			
Technology	Schedule	Customer Count	Total kW
Solar Energy	R - Residential	2,001	19,017.81
	J - Gen Service Dmd	49	2,829.13
	K - Small Gov Dmd	9	317.80
	L - Large Governmer	2	122.80
	P - Large Power	7	640.70
	G - Gen Serv Non-D	49	1,432.96
	S - Sm Gov Non-Dm	7	78.80
Wind Turbine	R - Residential	2	3.60
Grand Total		2,126	24,443.60

Projection Date Ending 12/31/2020				
Customer Rate Class	Sum of Size (kW)	*Annual Projected kWh Generated	Non-Fuel Yield \$/kWh	Estimated Annual Revenue Loss
R	19,021.41	30,966,317	0.087492	\$ 2,709,305.92
J	2,829.13	4,666,005	0.125682	\$ 586,432.96
K	317.80	518,889	0.133883	\$ 69,470.44
L	122.80	203,743	0.129809	\$ 26,447.73
P	640.70	1,056,495	0.109950	\$ 116,161.70
G	1,432.96	2,355,179	0.145397	\$ 342,436.05
S	78.80	125,245	0.147902	\$ 18,524.03
Grand Total	24,443.60	39,891,874		\$ 3,868,778.83

*Estimated number of hours from NREL for Guam (13.4 degrees North and 144 degrees East).

Estimated Annual Revenue Loss		
Year	Estimated kWh	*Total Estimated Cost
2019	36,806,287	\$ 3,546,649.04
2018	34,981,036	\$ 3,521,130.12
2017	28,242,917	\$ 2,828,834.71
2016	21,867,383	\$ 2,200,794.56
2015	7,383,621	\$ 856,921.27
2014	3,137,212	\$ 410,558.94
2013	1,556,949	\$ 178,996.00
2012	494,672	\$ 58,545.89
2011	170,070	\$ 18,177.13
2010	98,830	\$ 8,483.27
2009	23,912	\$ 1,656.87

*Source for effective yield rate from the Year End Revenue Reports (12 month Average Yield)

NET METERING
September 2020

Customer Count and Connected kW by Feeder					
Status	Feeder	Net Metering Connected kW	Customer Count	% of Feeder Maximum kW	% of Feeder Minimum Daytime kW
Completed	P-005	315.23	28	18.3%	36.7%
	P-046	300.29	36	7.1%	10.8%
	P-088	755.28	80	12.5%	19.9%
	P-089	627.97	77	14.0%	33.8%
	P-111	211.00	4	3.9%	6.9%
	P-203	564.09	43	7.5%	21.4%
	P-204	150.38	17	3.2%	6.6%
	P-205	44.00	5	0.9%	1.6%
	P-210	640.44	60	12.5%	17.0%
	P-212	1,086.12	105	26.3%	68.0%
	P-213	329.73	14	12.6%	16.9%
	P-220	187.22	21	30.7%	96.5%
	P-221	605.98	62	13.8%	27.4%
	P-223	563.15	61	23.7%	33.8%
	P-240	58.55	2	0.9%	7.9%
	P-245	259.60	7	5.2%	11.1%
	P-250	1,419.05	130	21.8%	38.3%
	P-251	160.50	8	6.5%	10.0%
	P-253	611.03	61	13.6%	21.5%
	P-262	1,176.14	118	30.9%	74.1%
	P-270	490.47	42	9.6%	19.4%
	P-271	323.37	18	5.5%	11.7%
	P-272	280.91	20	11.0%	24.9%
	P-280	371.54	30	20.7%	38.4%
	P-281	204.90	5	7.3%	20.4%
	P-282	31.75	4	0.8%	2.6%
	P-283	666.95	59	18.4%	31.6%
	P-294	1,328.62	125	30.7%	60.8%
	P-301	233.76	24	16.5%	29.4%
	P-311	1,150.59	68	28.8%	49.4%
	P-322	2,108.43	118	27.8%	55.2%
	P-323	316.52	21	6.7%	20.8%
	P-330	708.31	88	13.0%	26.2%
	P-331	827.91	91	13.1%	21.2%
	P-332	749.18	78	13.3%	19.4%
	P-340	568.49	50	31.4%	69.0%
	P-087	1,512.52	151	38.5%	60.3%
	P-252	646.73	37	15.3%	31.3%
	P-321	389.86	36	7.0%	7.8%
	P-260	99.76	10	14.5%	49.9%
	P-067	86.20	10	1.0%	1.3%
	P-312	82.24	5	4.9%	5.7%
	P-206	26.08	3	2.7%	4.8%
	P-242	23.75	2	0.4%	1.1%
	P-310	181.57	8	6.6%	12.1%
	P-261	510.06	54	18.4%	31.6%
	P-201	115.86	10	3.3%	5.8%
	P-007	85.86	8	11.9%	25.3%
	P-244	36.56	2	2.1%	2.1%
	P-202	39.50	3	1.2%	2.9%
	P-341	4.30	1	0.4%	1.6%
	P-401	117.00	2	10.3%	17.3%
	P-400	58.34	4	6.1%	6.2%
Completed Total		24,443.60	2,126		
pending	Pending	7.31	1	0.0%	0.0%
pending Total		7.31	1	0.0%	0.0%
Grand Total		24,450.91	2,127		
Feeders highlighted in yellow indicates renewable energy capacity has exceeded 25% of minimum daytime load.					
Feeders highlighted in red indicates renewable energy capacity has reached 75% of minimum daytime load.					

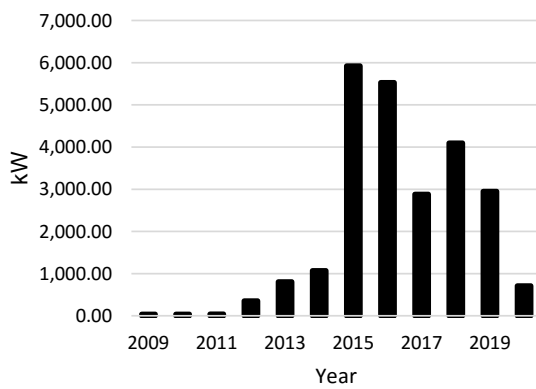
NET METERING

September 2020

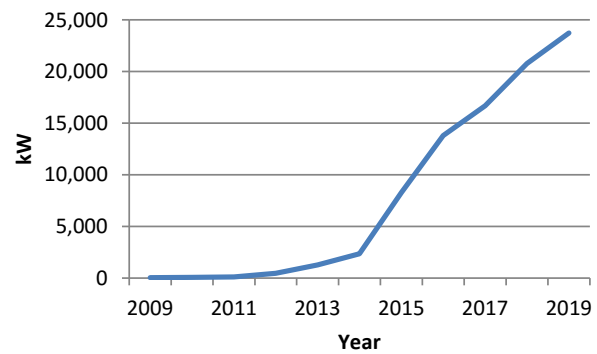
Installed kW by Year		
Year	Total	Cumulative
2009	39.46	39.46
2010	39.20	78.66
2011	41.61	120.27
2012	354.61	474.88
2013	808.15	1,283.03
2014	1,072.04	2,355.07
2015	5,923.43	8,278.50
2016	5,527.93	13,806.42
2017	2,881.10	16,687.52
2018	4,095.63	20,783.15
2019	2,949.09	23,732.24
2020	711.36	24,443.60
Grand Total	24,443.60	

Customer Count by Year		
Year	Total	Cumulative
2009	7	7
2010	2	9
2011	6	15
2012	27	42
2013	66	108
2014	94	202
2015	562	764
2016	530	1,294
2017	297	1,591
2018	291	1,882
2019	186	2,068
2020	58	2,126
Grand Total	2,126	

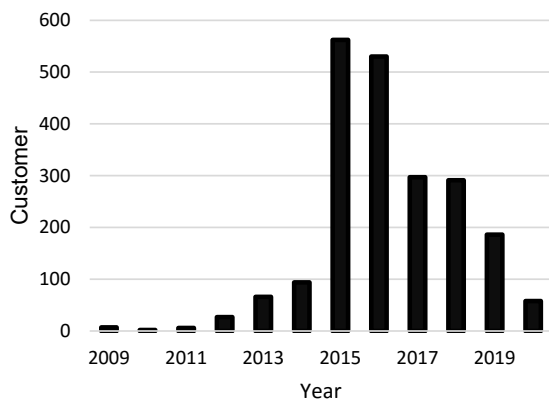
Yearly Installed kW



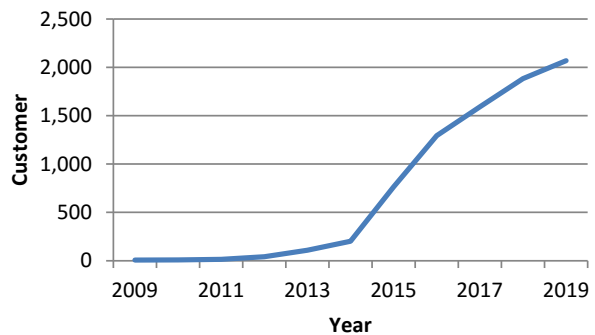
Cumulative Installed kW



Yearly Connected Customer Count



Cumulative Connected Customer Count





Production Data
30-Sep-20

SYSTEM											
YEAR	MONTH	# of DAYS	GROSS GENERATION	FUEL CONSUMPTION		GROSS FUEL EFFICIENCY (Target ≥ 15.99 kWh/gal)	COST per GROSS kWh	GROSS HEAT RATE (Baseloads) PUC Target less than 9,600	GROSS HEAT RATE (Peaking) PUC Target less than 13,600	Ave. MW	Peak MW
				(gal)	(bbl)						
2018	July	31	139,718,862	9,726,750	231,589	14.36	\$ 0.1468	9,647.53	11,909.20	188	242
	Aug	31	141,640,237	9,834,936	234,165	14.40	\$ 0.1437	9,817.09	13,623.96	190	238
	Sept	30	129,965,486	9,303,709	221,517	13.97	\$ 0.1526	9,383.54	13,625.29	181	240
	Oct	31	149,090,501	10,752,842	256,020	13.87	\$ 0.1592	9,870.49	12,783.94	200	243
	Nov	30	139,840,706	9,348,494	222,583	14.96	\$ 0.1446	9,772.22	12,091.07	194	241
	Dec	31	144,799,157	9,756,460	232,297	14.84	\$ 0.1497	9,443.41	11,943.41	195	237
2019	Jan	31	134,551,799	9,056,271	215,626	14.86	\$ 0.1172	9,677.80	11,506.72	181	224
	Feb	28	122,596,954	8,257,791	196,614	14.85	\$ 0.1152	9,592.63	11,923.40	182	226
	Mar	31	139,964,506	9,489,626	225,943	14.75	\$ 0.1309	9,586.39	12,331.54	188	234
	Apr	30	143,583,892	9,385,611	223,467	15.30	\$ 0.1249	9,597.50	11,794.45	199	244
	May	31	154,541,037	10,653,233	253,648	14.51	\$ 0.1378	9,854.93	12,008.47	208	254
	June	30	152,035,851	10,394,927	247,498	14.63	\$ 0.1378	9,756.34	11,985.93	211	255
	July	31	151,991,559	10,148,056	241,620	14.98	\$ 0.1230	9,789.72	11,505.06	204	251
	Aug	31	147,598,476	9,960,397	237,152	14.82	\$ 0.1259	9,622.68	11,430.55	198	253
	Sept	30	139,744,390	9,678,417	230,438	14.44	\$ 0.1259	10,019.86	11,676.24	194	243
	Oct	31	147,131,892	9,789,114	233,074	15.03	\$ 0.1294	9,742.17	12,670.15	198	247
	Nov	30	144,772,854	10,312,356	245,532	14.04	\$ 0.1437	9,631.16	12,353.82	201	245
	Dec	31	143,448,641	9,483,024	225,786	15.13	\$ 0.0993	9,649.19	11,794.69	193	236
2020	Jan	31	138,041,863	9,188,575	218,776	15.02	\$ 0.1286	9,706.87	11,592.61	186	227
	Feb	29	128,740,982	8,519,225	202,839	15.11	\$ 0.1226	9,833.72	11,408.84	192	230
	Mar	31	137,889,276	9,112,959	216,975	15.13	\$ 0.1034	9,421.93	11,671.89	185	233
	Apr	30	133,331,694	8,843,365	210,556	15.08	\$ 0.0847	9,991.96	11,780.63	185	228
	May	31	143,999,526	9,958,957	237,118	14.46	\$ 0.0623	10,067.47	12,493.35	194	241
	June	30	145,724,133	9,712,001	231,238	15.00	\$ 0.0566	9,939.81	11,940.43	202	244
	July	31	146,742,897	10,126,538	241,108	14.49	\$ 0.0628	9,981.69	12,019.94	197	240
	Aug	31	143,983,197	9,799,046	233,311	14.69	\$ 0.0637	10,061.45	11,585.62	194	243
	Sept	30	135,803,486	9,144,712	217,731	14.85	\$ 0.0699	9,634.17	11,744.73	189	244

GPA Work Session - October 15, 2020 - DIVISION REPORTS

ENGINEERING WORK ORDERS

Engineering Work Order Summary -September 2020	
Work Orders Received from CSR	27
Work Orders Processed & Released to T&D	48
Work Orders Processed & Released to CSR	17
Work Orders Cancelled	33
Work Orders Pending Survey	27
Total Pending WO at Engineering	411

Engineering Large Customer and Net Metering Tracking						
Date Received	Customer Name	Work Worder Numbers	Location	KVA	Meter Qty	Status
12/20/2013	CoreTech International	Multiple	Dededo	300	48	Lada Estates, 450 kVA, Phase I, II and III are 100% Completed - 308 units energized. Phase IV currently in Construction phase, 80% completed.
1/27/2015	TG Engineers	422182-85, 90-93, 96-98	Agana Heights	100	11	10 Unit Apartment, 100 kVA, 80% Completed. Work currently on hold.
6/1/2017	New Underground Line (P-047)	466064	Tumon	1,500	1	New Underground line 99% completed, Riser terminated. Mandrelling completed on completed sections. T&D started pulling wire and installing splices in August 2019. Pending final outage at SV1A and SV1B.
3/1/2018	Docomo Pacific Inc., New Data Center	Pending Application	Talofoto	3,000	1	New Data Center. Planned to come off P-260 and P-262. 0% Completed. Still in Design Phase.
10/10/18	Don Sadwahni	465341	Harmon	2,000	1	New Industrial Subdivision, Inspection of civil work only, Proposed 12 Pad Mounted Xfmrs 97% Completed.
05/14/19	Joyrich Group LLC	Multiple	Tamuning	150	17	New 17 Unit Apartments, 50% completed, 150 kVA.
10/01/19	Don Don Donkey "Don Quijote" Shopping Center	Pending Application	Tamuning	2,000	1	New Shopping Center at the intersection of Route 1 and 10A. Permitting phase.
12/01/19	Pacific Unlimited Inc. (Cold Storage)	471784	Tiyan	2,000	1	New Cold Storage, 50% Completed, Temp Power installed, 2000kVA.
12/01/19	Ironwood Villa Del Mar Phase II	Multiple Applications	Toto	440	88	New 88 Unit Apartment complex, 60% Completed, multiple xfmrs.
02/25/20	Yang,Kexin	Multiple	Mangilao	100	12	New 12 Unit Subdivision (4 applications submitted and permitted), 20% completed.
02/25/20	The Church of Jesus Christ LDS	474921	Yigo	750	1	New Church across Yigo Substation, 50% completed, 750 kVA.
03/11/20	Citi Development & Construction	478020-23,25,27-30	Tamuning	60	10	New 10 Unit Town Homes, 10% completed, 100 kVA.
07/07/20	Guam Waterworks Authority New Northern Wastewater Plant	479663	Dededo	3000	1	New Northern Wastewater Plant, 10% completed, 3000kVA.
07/10/20	Grand Rock Corp	480174-7	Santa Rita	75	4	New 4 unit subdivision, 90% completed.
08/04/20	Guam Waterworks Authority Southern Link Pump Station Upgrade	Pending Application	Dededo		1	Southern Link Pump Station Upgrades, 10 % completed, pending work clearance application.
10/06/20	GCA Trades Academy	481587	Tiyan	500	1	New Trades Academy Classrooms, 80% Completed, 500 kVA.
Varies	Pending Net Metering Customers	Varies	Various Locations Islandwide		1	Pending Net Metering Customers as of September June 30, 2020.
Total				15,975	200	

GPA Work Session - October 15, 2020 - DIVISION REPORTS

GUAM POWER AUTHORITY
GOVERNMENT ACCOUNTS RECEIVABLE
Billing up to September 30, 2020 and payments as of 10/09/2020

Current (09/30/20 Billing due 10/31/20)
30 days Arrears (08/31/20 due 09/30/20)
60 days and over Arrears (07/31/20 billing due 08/31/20)

CCAB New Account Number	DEPARTMENT	CCAB BALANCE 09/31/2020	CANCEL/REBILL/ SPEC CHARGE 10/09/2020	BILLING 09/30/2020	PAYMENT UP TO 10/09/2020	CCAB BALANCE 10/09/2020
Line Agencies						
1073430238	Dept. of Corrections	67,052.21		63,126.57		130,178.78
0040515913	Dept. of Parks & Rec.	10,798.37	453.31	10,258.80	(10,798.37)	10,712.11
0453170839	Guam Fire Department	29,211.11		13,828.03	(14,801.57)	28,237.57
8564647341	DOA Supply Mgmt (NET METERED)	2,958.80		981.05	(2,010.21)	1,889.64
4211873236	Dept. of Administration	8,606.37		2,660.83	(5,835.46)	5,431.74
4554808000	Nieves Flores Library	9,571.32		8,870.65		18,441.97
9541109130	General Services Agency	478.36		235.75	(240.90)	473.21
1621790133	DOA-Data Processing	7,860.02		7,447.89	(7,860.02)	7,447.89
1896187763	Dept. of PH&SS	33,163.07		31,517.78		64,680.85
7252821074	Dept. of Education	2,439,782.52	(2,523.16)	677,521.46	(1,465,845.08)	1,648,935.74
0266090802	Guam Police Department	79,654.38		37,647.62	(39,243.08)	78,058.92
6094619500	Dept. of Youth Affairs (Federal)	258.18		174.76		432.94
2913461337	Dept. of Youth Affairs* (Local)	10,282.34	(454.83)	9,818.18		19,646.69
3404311949	Guam Environmental Protect	5,560.53		4,910.60		10,471.13
3227599882	Mental Health/Subst.	38,300.38		34,923.36		73,223.74
6841080463	Guam Behavioral Health & Wellness	1,754.40		1,675.84		3,430.24
0070861777	Veteran Affairs	3,463.04		1,574.83		5,037.87
0243861917	Guam Veterans Affairs Office	0.00		0.00		0.00
8300433573	Civil Defense (Military Affairs)	29,685.17		9,464.35	(19,694.88)	19,454.68
7813165805	Pacific Energy Resource Center	384.73		343.42		728.15
1595188609	Dept. of Agriculture	25,186.87		7,679.64	(16,541.54)	16,324.97
2535890809	DPW-FAC Adm Account	27,209.64		22,924.60	(1,340.67)	48,793.57
1702824234	Guam Visitors Bureau	3,469.44		3,367.69		3,367.69
7663706771	Yona Senior Citizen Center	1,321.39		595.35	(722.42)	1,194.32
4129848191	Dept. of Chamorro Affairs/Chamorro Village	5,398.38		3,392.93		7,791.31
3558733700	Dept. of Chamorro Affairs/Chamorro Village (NET METER)	221.66		110.83		332.49
5247210000	Mayors Council	14,830.01		1,946.23	(10,495.84)	6,080.40
6203410000	Office of the Governor	16,738.71		15,954.97		15,954.97
8556858369	Dept. of Chamorro Affairs (Guam Museum)	48,158.67		15,022.69	(32,029.77)	31,151.59
1099514147	Dept. of Chamorro Affairs/Repository	1,282.04		931.37	(988.89)	484.52
Sub Total		2,922,439.11	(2,524.68)	987,129.11	(1,648,653.85)	2,258,389.69
MAYORS						
3832327736	Santa Rita Mayor	4,303.70		2,567.61	(2,138.65)	4,732.66
9351070242	Ordor/Chan/Pago Mayor	1,689.39		597.81	(832.80)	1,454.30
6393530237	Haginta Mayor	1,347.16		547.63	(730.24)	1,164.55
3293808984	Pis Mayor	1,674.18		772.62	(826.20)	1,620.60
0711052035	Mongmong/Toto/Mate Mayor	2,768.27		1,664.17	(1,431.36)	2,939.08
0492244686	Asan/Maria/Adelpup Mayor	2,274.50		752.19	(1,257.68)	1,769.01
8433950204	Sinajaya Mayor	5,712.57		2,578.00	(2,688.26)	5,602.31
8041715847	Dededo Mayor	9,621.66		4,004.98	(5,074.97)	8,551.67
7037824246	Vigo Mayor	5,213.33	(669.78)	2,883.93	(2,657.07)	4,770.41
7202265287	Unlited Mayor	2,003.73	(254.42)	2,003.73	(1,000.90)	1,832.22
8472200165	Agaña Hts. Mayor	5,634.93		2,617.10	(2,971.80)	5,480.23
4469579988	Merizo Mayor	1,576.28		653.22	(661.23)	1,568.27
5763167341	Barrigada Mayors Office	3,874.35		1,563.76	(2,046.70)	3,391.41
7247791682	Agat Mayor	4,641.69		2,170.26	(2,280.82)	4,531.13
0078244037	Inangan Mayor	4,911.61		2,076.82	(2,193.26)	4,795.17
6967250325	Tamuning Mayor	8,627.73		3,818.22	(4,455.79)	7,990.16
1880297633	Talofoto Mayor	3,074.28		942.95	(1,730.68)	2,286.55
3631627096	Mangilao Mayor	6,982.32	(624.44)	3,832.10	(3,579.25)	6,610.73
1837525565	Yona Mayor	1,848.79		1,018.46	(961.94)	1,905.31
Sub Total		\$ 77,878.47	\$ (1,548.64)	\$ 36,191.73	\$ (39,529.79)	\$ 73,061.71
DPW ACCOUNTS						
3045433600	DPW-Village St. Lights	663,055.12		299,544.24		962,599.36
0930959866	DPW-Primary St. Lights	242,192.30		67,213.47		309,405.77
3088404552	DPW-Sea/Coll St. Lights	44,606.46		18,277.54		62,884.00
0632688062	DPW-Signal Lights	9,402.84		8,402.84		16,633.64
Sub Total		\$ 958,256.72	\$ -	\$ 393,266.05	\$ -	\$ 1,351,522.77
(B) AUTONOMOUS/PUBLIC CORP						
1540692986	Retirement Fund	5,153.82	355.74	5,012.99	(5,153.82)	5,368.73
0563872892	Guam Housing Corp Rental Division	654.27		616.44		616.44
5434057703	University of Guam	131,836.59		123,809.46	(131,836.59)	123,809.46
7736362694	Guam Airport Authority	327,758.56		319,805.04	(327,758.56)	319,805.04
5357510000	University of Guam (NET METERED)	45,321.64		53,123.89	(45,321.64)	53,123.89
1699407298	G H U R A	9,341.84		20,013.53	(21,126.42)	8,228.95
0518220019	Guam Community College	35,362.53	(193.13)	34,489.91	(35,362.53)	34,296.78
8302337726	Guam Memorial Hospital	30,295.88		29,057.16	(30,295.88)	29,057.16
8426836906	Guam Memorial Hospital (NET METERED)	115,725.64		114,625.04	(115,725.64)	114,625.04
4474308144	Port Authority of Guam	64,804.64	(616.86)	69,510.21	(64,804.64)	68,893.35
9157510000	Guam Community College (NET METERED)	22,817.41		21,751.43	(22,817.41)	21,751.43
9172100000	Guam Solid Waste Authority	15,761.92	(826.90)	5,296.73	(10,491.11)	8,642.64
0838495949	Guam Waterworks Authority	1,006,377.01	(501.75)	984,074.72	(1,006,377.01)	983,572.97
4075914809	GPA	-	(71,660.58)	71,660.58		-
Sub Total		\$ 1,811,811.75	\$ (73,543.48)	\$ 1,852,849.13	\$ (1,816,325.52)	\$ 1,772,791.88
(C) OTHERS						
7541928173	Guam Legislature	271.66		276.58	(271.66)	276.58
9503154359	Guam Legislature (NET METERED)	6,110.15		6,115.50	(6,110.15)	6,115.50
8353274954	Superior Court of Guam	41,922.83		41,938.54	(41,922.83)	41,938.54
8108458168	Guam Post Office (Agaña)	4,979.50	582.07	4,573.33	(4,979.50)	5,155.40
0892267006	Customs & Quarantine Agency	1,422.27		641.90		2,064.07
4530787043	U.S. Post Office	30,367.06		29,681.34	(30,367.06)	29,681.34
8607446612	Dept. of Military Affairs	127,591.17		63,231.87	(127,591.17)	63,231.87
3209463043	Dept. of Military Affairs (NET METERED)	28,874.46		13,803.04	(28,874.46)	13,803.04
8000770566	KGTF	22,735.78		5,290.43	(17,057.33)	10,968.88
6602566745	Tamuning Post Office	4,670.79		4,585.87	(4,670.79)	4,585.87
Sub Total		\$ 268,945.67	\$ 582.07	\$ 170,138.30	\$ (261,844.95)	\$ 177,821.99
GRAND TOTAL		\$ 6,039,431.72	\$ (77,034.73)	\$ 3,439,484.32	\$ (3,768,354.11)	\$ 5,633,527.20

AGING

0-30 Days	31-60 Days	61-90 Days	91-120 Days	>120 Days	Total
\$ 63,126.57	\$ 67,052.21	\$ -	\$ -	\$ -	\$ 130,178.78
\$ 10,612.32	\$ 99.79	\$ -	\$ -	\$ -	\$ 10,712.11
\$ 13,828.03	\$ 14,409.54	\$ -	\$ -	\$ -	\$ 28,237.57
\$ 941.05	\$ 948.59	\$ -	\$ -	\$ -	\$ 1,889.64
\$ 2,660.83	\$ 2,770.91	\$ -	\$ -	\$ -	\$ 5,431.74
\$ 8,870.65	\$ 9,450.76	\$ 120.56	\$ -	\$ -	\$ 18,441.97
\$ 235.75	\$ 237.46	\$ -	\$ -	\$ -	\$ 473.21
\$ 7,447.89	\$ -	\$ -	\$ -	\$ -	\$ 7,447.89
\$ 31,517.78	\$ 29,435.11	\$ 3,727.96	\$ -	\$ -	\$ 64,680.85
\$ 677,652.67	\$ 735,388.89	\$ 235,894.18	\$ -	\$ -	\$ 1,648,935.74
\$ 37,647.62	\$ 39,243.08	\$ 1,168.22	\$ -	\$ -	\$ 78,058.92
\$ 174.76	\$ 258.18	\$ -	\$ -	\$ -	\$ 432.94
\$ 9,364.35	\$ 10,282.34	\$ -	\$ -	\$ -	\$ 19,646.69
\$ 4,910.17	\$ 5,560.53	\$ -	\$ -	\$ -	\$ 10,470.70
\$ 34,923.36	\$ 34,788.68	\$ 3,511.70	\$ -	\$ -	\$ 73,223.74
\$ 1,675.84	\$ 1,754.40	\$ -	\$ -	\$ -	\$ 3,430.24
\$ 1,574.83	\$ 1,709.50	\$ 1,753.54	\$ -	\$ -	\$ 5,037.87
\$ 9,464.39	\$ 9,990.29	\$ -	\$ -	\$ -	\$ 19,454.68
\$ 343.42	\$ 384.73	\$ -	\$ -	\$ -	\$ 728.15
\$ 7,679.64	\$ 8,645.33	\$ -	\$ -	\$ -	\$ 16,324.97
\$ 22,924.60	\$ 24,291.27	\$ 1,577.70	\$ -	\$ -	\$ 48,793.57
\$ 3,367.69	\$ -	\$ -	\$ -	\$ -	\$ 3,367.69
\$ 595.35	\$ 598.97	\$ -	\$ -	\$ -	\$ 1,194.32
\$ 2,392.93	\$ 2,602.42	\$ 2,795.96	\$ -	\$ -	\$ 7,791.31
\$ 110.83	\$ 110.83	\$ 110.83	\$ -	\$ -	\$ 332.49
\$ 1,946.23	\$ 4,134.17	\$ -	\$ -	\$ -	\$ 6,080.40
\$ 15,954.97	\$ 16,128.90	\$ -	\$ -	\$ -	\$ 31,151.59
\$ 15,022.69	\$ 16,128.90	\$ -	\$ -	\$ -	\$ 31,151.59
\$ 191.37	\$ 293.15	\$ -	\$ -	\$ -	\$ 484.52
\$ 987,159.01	\$ 1,020,570.03	\$ 250,660.65	\$ -	\$ -	\$ 2,258,389.69
\$ -	\$ -	\$ -	\$ -	\$ -	\$ -
\$ 2,567.61	\$ 2,165.05	\$ -	\$ -	\$ -	\$ 4,732.66
\$ 597.81	\$ 856.49	\$ -	\$ -	\$ -	\$ 1,454.30
\$ 547.63	\$ 616.92	\$ -	\$ -	\$ -	\$ 1,164.55
\$ 772.62	\$ 847.98	\$ -	\$ -	\$ -	\$ 1,620.60
\$ 1,604.17	\$ 1,334.91	\$ -	\$ -	\$ -	\$ 2,939.08
\$ 752.19	\$ 1,016.82	\$ -	\$ -	\$ -	\$ 1,769.01
\$ 2,578.00	\$ 3,024.31	\$ -	\$ -	\$ -	\$ 5,602.31
\$ 4,004.98	\$ 4,546.69	\$ -	\$ -	\$ -	\$ 8,551.67
\$ 2,214.15	\$ 2,556.26	\$ -	\$ -	\$ -	\$ 4,770.41
\$ 845.46	\$ 992.74	\$ -	\$ -	\$ -	\$ 1,838.22
\$ 2,617.10	\$ 2,852.27	\$ 10.86	\$ -	\$ -	\$ 5,480.23
\$ 653.22	\$ 915.05	\$ -	\$ -	\$ -	\$ 1,568.27
\$ 1,563.76	\$ 1,827.65	\$ -	\$ -	\$ -	\$ 3,391.41
\$ 2,038.57	\$ 2,310.87	\$ 181.69	\$ -	\$ -	\$ 4,531.13
\$ 2,076.82	\$ 2,192.45	\$ 525.90	\$ -	\$ -	\$ 4,795.17
\$ 3,818.22	\$ 4,171.94	\$ -	\$ -	\$ -	\$ 7,990.16
\$ 942.95	\$ 1,343.60	\$ -	\$ -	\$ -	\$ 2,286.55
\$ 3,207.66	\$ 3,403.07	\$ -	\$ -	\$ -	\$ 6,610.73
\$ 1,018.46	\$ 886.85	\$ -	\$ -	\$ -	\$ 1,905.31
\$ 34,421.40	\$ 37,861.92	\$ 718.45	\$ -	\$ -	\$ 73,061.71
\$ 299,544.24	\$ 301,651.36	\$ 305,871.95	\$ 55,531.81	\$ 0.00	\$ 962,599.36
\$ 67,213.47	\$ 66,207.79	\$ 68,976.94	\$ 68,027.82	\$ 38,979.75	\$ 309,405.77
\$ 18,277.54	\$ 18,390.70	\$ 18,628.84	\$ 7,586.92	\$ -	\$ 62,884.00
\$ 8,230.80	\$ 8,402.84	\$ -	\$ -	\$ 0.00	\$ 16,633.64
\$ 393,266.05	\$ 394,652.69	\$ 393,477.73	\$ 131,146.55	\$ 38,979.75	\$ 1,351,522.77
\$ 5,368.73	\$ -	\$ -	\$ -	\$ -	\$ 5,368.73
\$ 616.44	\$ -	\$ -	\$ -	\$ -	\$ 616.44
\$ 123,809.46	\$ -	\$ -	\$ -	\$ -	\$ 123,809.46
\$ 319,805.04	\$ -	\$ -	\$ -	\$ -	\$ 319,805.04
\$ 53,123.89	\$ -	\$ -	\$ -	\$ -	\$ 53,123.89
\$ 8,228.95	\$ -	\$ -	\$ -	\$ -	\$ 8,228.95
\$ 34,296.78	\$ -	\$ -	\$ -	\$ -	\$ 34,296.78
\$ 29,057.16	\$ -	\$ -	\$ -	\$ -	\$ 29,057.16
\$ 114,625.04	\$ -	\$ -	\$ -	\$ -	\$ 114,625.04
\$ 68,893.35	\$ -	\$ -	\$ -	\$ -	\$ 68,893.35
\$ 21,751.43	\$ -	\$ -	\$ -	\$ -	\$ 21,751.43
\$ 5,206.73	\$ 4,343.91	\$ -	\$ -	\$ -	\$ 9,550.64
\$ 978,092.12	\$ 5,480.85	\$ -	\$ -	\$ -	\$ 983,572.97
\$ -	\$ -	\$ -	\$ -	\$ -	\$ -
\$ 1,762,967.12	\$ 9,824.76	\$ -	\$ -	\$ -	\$ 1,772,791.88
\$ 276.58	\$ -	\$ -	\$ -	\$ -	\$ 276.58
\$ 6,115.54	\$ -	\$ -	\$ -	\$ -	\$ 6,115.54
\$ 41,938.54	\$ -	\$ -	\$ -	\$ -	\$ 41,938.54
\$ 5,155.40	\$ -	\$ -	\$ -	\$ -	\$ 5,155.40
\$ 641.80	\$ 698.92	\$ 723.35	\$ -	\$ -	\$ 2,064.07
\$ 29,681.34	\$ -	\$ -	\$ -	\$ -	\$ 29,681.34
\$ 63,231.87	\$ -	\$ -	\$ -	\$ -	\$ 63,231.87
\$ 13,803.04	\$ -	\$ -	\$ -	\$ -	\$ 13,803.04
\$ 5,200.41	\$ 5,678.45	\$ -	\$ -	\$ -	\$ 10,878.86
\$ 4,585.87	\$ -	\$ -	\$ -	\$ -	\$ 4,585.87
\$ 170,720.37	\$ 6,377.37	\$ 723.35	\$ -	\$ -	\$ 177,821.09